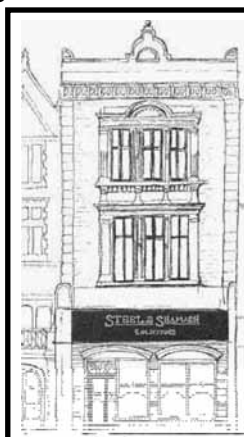


May 2012

in SE1

Issue 167

FREE



STEEL & SHAMASH
THE WATERLOO COMMUNITY SOLICITORS

We can help with all your legal problems

- Family
- Children
- Housing
- Criminal

For a friendly professional service
Only two minutes from Waterloo Station

Contact Steel & Shamash
12 Baylis Road • Waterloo • London • SE1 7AA
Tel: 020 7803 3999
Email: mail@steelandshamash.co.uk

SE1 residents urged to start growing plants and vegetables for Octavia Hill centenary show

Bankside Open Spaces Trust is inviting SE1 residents to grow flowers and vegetables or make home produce for a flower show in celebration of Octavia Hill a century after her death.



The Flower and Vegetable Show on Friday 14 September is a tribute to the Southwark Flower Show Octavia Hill regularly held at Red Cross Garden over a century ago.

Hill was a prominent social reformer and founder of Red Cross Garden and the National Trust.

With four and a half months to go, BOST is urging local residents to start growing in preparation for the big day.

"We are really looking forward to bringing together the many different individuals and groups working on Edible Bankside gardens, and at the same time honouring the work of the great open spaces campaigner, Octavia Hill, who helped make this area green for the people who live here," says BOST director Helen Firminger.

"We hope as many people as possible can join us."

For more information, if you'd like seeds or help growing your flowers or vegetables – or if you would like to know where your nearest Edible Bankside garden is – you can contact Nicola or Hej at BOST on 020 7403 3393 or redcross@bost.org.uk

Full instructions for how to enter the show, as well as details of judges and prizes, will soon be available at www.bost.org.uk

The show, which is open to entries from individuals and groups, will have 12 categories:

- A seasonal SE1 grown floral display in a small vase – judged for presentation and variety
- Best SE1 September Display – vegetable and fruit display in a bowl or basket
- Most Unusual SE1 Vegetable eg unusual shaped carrot
- SE1 goes Exotic – home grown fruit or vegetable display eg okra, melon, tomatillo
- Best home produce entry – eg quiche, carrot cake, chutney (must contain at least some SE1 ingredients)
- Most interesting arrangement – container with SE1-grown flowers and vegetables eg in a shoe, tea cup, toy etc. (adult & under-14 sections)
- Biggest SE1 Pumpkin – or squash or marrow or other member of the gourd family.
- Best painting or drawing of a local flower or garden (adult & under-14 sections)
- Best photograph of a local flower or garden (adult &

- under-14 sections)
- Best SE1 Sunflower (under-14s)
- Paper garden which can be created on the day (under-14s)
- Best Octavia Hill Pelargonium (adult & under-14 sections).

Plug plants can be potted up and collected at Red Cross Garden during the May Festival on Friday 11 May. If you cannot make the May Festival event please get in contact with Agnes at BOST to collect your plug plant from Red Cross Garden while stocks last.

FRANK HARRIS
and Company

South Bank Specialists

**RESIDENTIAL SALES,
LETTINGS
and MANAGEMENT**

123 Stamford Street SE1 9NN

020 7620 3400

www.frankharris.co.uk



in SE1

27 Blackfriars Road
London SE1 8NYTel 020 7633 0766
Web www.inSE1.co.uk© 2012 Bankside Press
ISSN 1750-1334 (Print)
ISSN 1750-1342 (Online)Editor
Leigh Hatts
leigh.hatts@banksidepress.com
Production Editor
James Hatts
james.hatts@banksidepress.com
Contributing writer
Marion Marples

Printed by Copyprints Ltd

ADVERTISING

For details of our competitive rates call us for a rate card on 020 7633 0766 or email sales@inSE1.co.uk. You can also download our rate card from www.inSE1.co.uk

SUBSCRIPTIONS

To receive the next 12 issues by post in the UK please send a cheque for £10 to the address above, made payable to 'in SE1'. Please specify starting issue.

LISTINGS INFORMATION

Listings for most types of local event are free; details of events to be considered for inclusion next month should be sent by **Tuesday 22 May** to se1events@banksidepress.com or by post.

DISCLAIMER

Every effort is made to ensure the accuracy of our listings but all details are subject to alteration by venues and organisers and no responsibility can be accepted for any inaccuracies.

londonSE1
community websiteWe also publish a community website, updated daily with local news and features and a lively discussion forum. Visit it at www.London-SE1.co.uk

[SE1 Direct]

To ensure that you don't miss out on anything that's happening in the area, make sure you receive our weekly email newsletter every Monday. Sign up today by visiting www.SE1direct.co.uk. With more than 7,200 subscribers, can you afford to miss out?

This month in brief

Jack in the Green

Fowlers Troop will bring their Deptford Jack in the Green to the streets of Borough & Bankside on Tuesday 1 May. Look out for this curious May Day tradition around Southwark Street and Borough High Street from 11am and then in the afternoon at the Founders Arms and the backstreets of Bankside.
www.deptford-jack.org.uk

Thameslink goes 7 days

This month a full seven-day service will be restored on First Capital Connect's Thameslink rail route across central London through Blackfriars. The new Blackfriars Station, with entrances on Bankside and the north side of the river, will also be open later on weekdays. The new timetable, which comes into force on Saturday 19 May, will see all four platforms at the new cross-river station in use for the first time.

Rickshaw Challenge

On Friday 25 May three rickshaws will set off from the Clifton Suspension Bridge on a four-day charity ride to Tower Bridge in aid of a multiple sclerosis charity. Look out for the riders passing through SE1 on Monday 28 May.
www.brams.org.uk

Southwark Civic Awards

This year's Southwark Civic Awards will be presented at St George's Cathedral on Saturday 12 May. The ceremony will include the granting of the freedom of the borough to a range of distinguished local people, including historian Stephen Humphrey and Beormund Community Centre's Coral Newell. At the same ceremony HHJ Roger Chapple, senior judge at Inner London Crown Court, will be given the title Recorder of Southwark.

Jubileo

A new 'pay-as-you-go' public toilet is due to open on the South Bank this month. Called the Jubileo, the structure is located on the Queen's Walk between Hungerford Bridge and the Jubilee Gardens flagpole. The conveniences even have their own Facebook page:
www.facebook.com/jubileo

Alfred Salter statue

The seated statue of Bermondsey MP and social reformer Dr Alfred Salter was stolen from Cherry Garden last year and the accompanying sculptures of his daughter Joyce and the family cat were removed for safekeeping. A community group formed in the hope that the original statue could be recovered but soon refocused its efforts on making plans for a new public memorial to the famous doctor and parliamentarian. With £20,000 already raised towards a £100,000 appeal target, Southwark Council has now published a questionnaire to offer Bermondsey and Rotherhithe residents the opportunity to comment on the form and location of the new artwork. The working group has shortlisted eight possible sites – three in SE1 and five in SE16.
www.London-SE1.co.uk/n5932

Shortwave Cinema

Shortwave in Bermondsey Square is having a revamp this month, with new air conditioning and projection equipment being installed. Look out for a wider range of films, including new releases, when the work is completed.

Bill Clinton in Waterloo

Bill Clinton and Gwyneth Paltrow are coming to the Old Vic Tunnels on Tuesday 22 May for a fundraising event for the Clinton Foundation.

Oasis Jubilee Buntathon

To celebrate the Queen's Diamond Jubilee, Oasis is hoping to set a new Guinness World Record to create the world's longest line of bunting at its Jubilee Jamboree event on Waterloo Millennium Green on Monday 4 June. Oasis is asking locals to get in touch with Ro Leech ro.leech@oasisuk.org or telephone 020 7921 4205 if they would like to contribute to the bunting project.

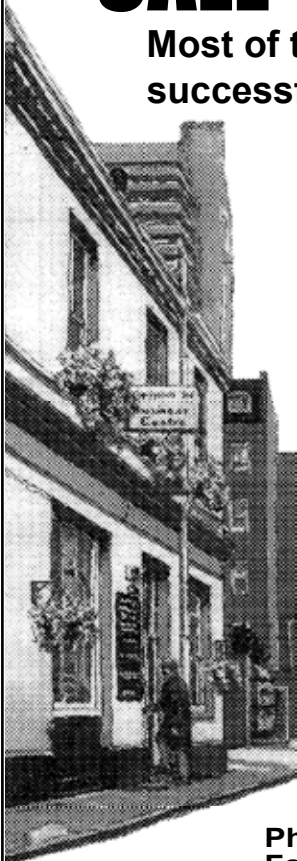
Community Assets

On Saturday 5 May the Walworth Society is carrying out an audit of community assets in Newington Ward which includes the Draper Estate and Strata tower in SE1. All welcome to join in.
walworthsociety.co.uk

CALL in the YARD

Most of the big and successful local firms

do when they have something to say and they would like us to give a sharp edge to it.

PRINT
COPIES
REPORTS
BROCHURESCommunication
of all kindsCopyprints Ltd
BUSINESS CENTRE
1 Talbot Yard
SE1 1YPwww.copyprintsltd.co.ukPhone 020 7407 2079
Fax 020 7403 5411

What's On

May

Comprehensive local listings

Special events

Archbishop's Park

Carlisle Lane

Saturday 19 & Sunday 20 May
THE BIG BUZZ AND FLUTTER
11am-1pm; free

A series of four fun weekends for all the family - learn about beekeeping and wildlife and help plant a bee-friendly lavender hedge for the park bees. They need more food so they can make more honey. Wildlife stalls, jigsaws, a drawing area, honey biscuits, mosaic making plus refreshments for volunteers.

→ Full info at se1.net/12544

Borough Market

8 Southwark Street
www.boroughmarket.org.uk

Sunday 20 May
FOOD + ART
12 noon-4pm

Borough Market has teamed up with Southwark Arts Forum to stage a one-day festival of food, art and music.

→ Full info at se1.net/12473

BOST EcoHouse

Ayres Street
www.bost.org.uk

Wednesday 2 May
BOST ECOHOUSE OPENING
3.30pm-5.30pm; free

Bankside Open Spaces Trust is holding a launch event to celebrate its new green building, which will be the centre of operations for all the trust's community gardening, volunteering, and parks work across SE1. The public will be invited to look round the building from 3.30pm with speeches at 4.30pm. BOST will be offering tours of the EcoHouse, handing out plants as part of the Edible Bankside community project and running children's activities.

→ Full info at se1.net/12504

Design Museum

Shad Thames T 0870 909 9009
www.designmuseum.org

Friday 4 May
DESIGN OVERTIME: SHOE AND TELL
6pm-10pm; £7.50 in advance; £11 on the door

Footwear-themed late night opening at the Design Museum.

→ Full info at se1.net/12568

Geraldine Mary Harmsworth Park

Lambeth Road

Wednesday 9 May
VICTORY DAY ACT OF REMEMBRANCE

Soviet War Memorial; 11am

Participants in the Act of Remembrance will include a representative of the Mayor of Southwark; the Russian ambassador and ambassadors and representatives from other CIS embassies; British and Russian Second World War veterans; standard bearers from UK veterans organisations, the Drill Squad of the London Nautical School and other individuals and organisations supporting the memorial. The short ceremony will include brief addresses from key participants, the sounding of the Last Post and a two minute silence.

→ Full info at se1.net/11762

Hotel Elephant

77-85 Newington Causeway
hotelelephantgallery.blogspot.com

Friday 4 May
BREATHE LIVE ART
8pm-1am; £4

Performance art, sonic art, live music, installations, films and DJs. The event will showcase local artists and bands plus recent graduates from London College of Communication alongside some more established artists.

→ Full info at se1.net/12551

James Clerk Maxwell Building

57 Waterloo Road
www.kcl.ac.uk

Tuesday 1 May
DR BIKE

5.30pm-7.30pm; free
Bring your bike along to Lambeth Council's Dr Bike event in the piazza opposite BFI IMAX and get a free safety check from an expert mechanic and lots of friendly advice on cycling and cycle training. Plus the opportunity to sit in the cab of an HGV to learn what drivers can (and can't) see.

→ Full info at se1.net/12479

Lambeth Palace Garden

Lambeth Palace Road
www.archbishopofcanterbury.org/palace

Saturday 19 May
NATIONAL GARDENS SCHEME OPEN DAY

2pm-5.30pm; £4 (children free)
Lambeth Palace garden is one of the oldest and largest private gardens in London. Site occupied by Archbishops of Canterbury since the end of the 12th century. Formal courtyards with historic white fig (originally planted 1555). Parkland-style garden with mature trees, woodland and native planting, pond, hornbeam allée. Also formal terrace, summer gravel border, scented chapel garden and beehives. Home-made teas available.

→ Full info at se1.net/12226

London South Bank University

London Road Building
www.lsbu.ac.uk

Wednesday 2 May
LIVEWELL FAIR
11am-4.30pm; free

A variety of stalls will offer visitors of all ages and abilities the opportunity to take on fitness challenges in the fitness suite with the chance to win personal training sessions, understand how to achieve a balanced diet with

healthy eating and nutritional advice and find out more about how to stay healthy with advice on blood pressure, cholesterol and body mass index. Visitors can relax with taster massages from a trained physiotherapist. There will be information and advice on alcohol, drug and sexual health awareness as well as specialist advice from local charities and organisations including British Heart Foundation, and Mind (mental health).

→ Full info at se1.net/12530

Mint Street Park

Southwark Bridge Road

Friday 25 May
PLAYING AT MINT STREET
4pm-6pm; free

Live music, children's sports and a chance to talk about the changes proposed for Mint Street Park. Refreshments, bouncy castle etc.

→ Full info at se1.net/12495

Morley College

61 Westminster Bridge Road T 020 7928 8501
www.morleycollege.ac.uk

Friday 18 May
FREE TASTER SESSIONS

Various times; booking essential; see website; free

As part of Adult Learners' Week the college is offering an afternoon of free taster sessions providing the opportunity to try out a number of activities including crochet, photography, creative writing, yoga, African drumming, jazz dance, public speaking, Italian and much more. Each session lasts one hour and no prior experience is required.

→ Full info at se1.net/12528

Red Cross Garden

Redcross Way T 020 7403 3393
www.bost.org.uk

Friday 11 May
MAY FESTIVAL

3.30pm-5.30pm; free
Maypole dancing, flower craft activities, Victorian dresses to try on and face painting.

→ Full info at se1.net/12461

South Bank Riverside Walkway

The Queen's Walk near Gabriel's Wharf

Thursday 17 to Sunday 20 May
ANIMAL ART FAIR

11am-6pm; £10 (£8 in advance); children & concessions free
From recycled metal sculptures through African art and artists to sporting watercolours you will find an encyclopaedic array of talent covering every price range. Previously held at Fulham Palace, this year's fair is taking place on the South Bank close to Gabriel's Wharf.

→ Full info at se1.net/12270

St George the Martyr

Borough High Street T 020 7357 7331
www.stgeorge-themartyr.co.uk

Thursday 17 to Saturday 19 May
LONDON PHOTO FESTIVAL

The Crypt; Thu 10am-7pm; Fri 10am-late; Sat 10am-8pm; free
The London Photo Festival aims to promote the sale and appreciation of

photographic art. The festival provides amateur and semi-professional photographers with the opportunity to exhibit their work, gain professional feedback and to join a thriving community of photographers.

→ Full info at se1.net/11964

St John's Waterloo

73 Waterloo Road T 020 7633 9819
www.stjohnswaterloo.org

Saturday 26 May
PENTECOST FESTIVAL SPONSORED FIREWALK

10am-12.30pm; £15 (reg fee); £50 (sponsorship)

Hot foot it to Waterloo and set fire to your fears by walking barefoot over red-hot coals. You'll receive a full two-hour training session and then perform your amazing fire walk in front of friends and family. Participants must commit to raising at least £50 for Christian Aid to help communities in poverty get out of poverty.

→ Full info at se1.net/12513

Waterloo Library

114-118 Lower Marsh T 020 7926 8750
www.lambeth.gov.uk

Tuesday 8 May
HERITAGE LIBRARY SESSION

10.30am-12 noon; free
Join the Living Memory heritage project for a library session with a focus on local artists and art work.

→ Full info at se1.net/12507

Waterloo Station

Waterloo Road

Saturday 19 May
THE SOLDIER CHALLENGE

Waterloo International; £50 per person (in teams of 2, 3 or 4)
A fundraising challenge event that gives you the chance to experience some of London's most famous sights in a completely new way. From the event village in Waterloo station, you and your team mates will be sent out onto the streets with one mission - to complete as many of 35 military-inspired checkpoints as you can in four hours. From abseiling at the Oval to an obstacle course in the moat of the Tower of London, you will get exclusive access to some of the capital's best known landmarks. In aid of ABF The Soldiers' Charity

→ Full info at se1.net/12494

Woolfson & Tay

12 Bermondsey Square T 020 7407 9316
www.woolfsonandtay.com

Wednesday 2 May
SOUTHWARK LGBT MONTHLY

7pm-9pm; free
Southwark LGBT Network hosts a panel discussion on LGBT wellbeing chaired by Dr Jonty Heaversedge, co-author of 'The Mindful Manifesto', with speakers from 4in10, SLAM and others talk about being happy and proud despite life's ups and downs. Expect a lively discussion.

→ Full info at se1.net/12372

CONNECTING LONDON

Whatever IT takes

0207 407 1335

support@connectinglondon.com

129 Great Suffolk Street, London, SE1 1PP

www.connectinglondon.com



Your Local IT Company

We can help you with all of your IT needs:

- Maintenance and support contracts.
- PC support, repair, recovery and disinfection services.
- Competitive Home and Business Broadband Solutions.
- Web hosting and web design.
- Full server and virtualization solutions.
- "CLOUD" services including email hosting.
- Mobile Communications and BlackBerry services.
- Engineer labour rates start at £50+VAT per hour for the SE1.

Children & family

Imperial War Museum

Lambeth Road T 020 7416 5000
london.iwm.org.uk
Daily 10am-6pm; free

Saturday 26 & Sunday 27 May
BUILD THE TRUCE FAMILY ACTIVITY

11am-1pm & 2pm-4pm; free
Take part in a series of discussion, art and writing activities looking at why wars happen and how they are brought to an end. Linked to the new Build the Truce exhibition. Free drop-in activities for all ages with parental supervision.
→ Full info at se1.net/12533

St Mary Magdalen

Bermondsey Street
www.stmarysbermondsey.org.uk

Friday 11 May
CLASSICS WITH MY BABY

10.30am (eat cake and mingle from 10am); adults £10 (children free) at the door

This month's concert features flautist Saleta Suarez Ogando from Seville. A classical concert series for babies and toddlers, performed by award winning international artists (and local mums) Miaomiao Yu and Philippa Mo.
→ Full info at se1.net/12131

Public meetings

Waterloo Action Centre

14 Baylis Road T 020 7261 1404
www.waterlooaactioncentre.co.uk

Wednesday 9 May
WATERLOO COMMUNITY DEVELOPMENT GROUP GENERAL MEETING

7pm
Regular public meeting of the group that monitors planning and development issues in Waterloo. Hear from the developers and help to shape the community's response.
→ Full info at se1.net/12217

Talks & literature

Ability Media Centre

56 Southwark Bridge Road T 08456 717173
www.abilitymedia.org

Thursday 3 May
THE ELECTRIC UNIVERSE

6pm; Charity donation to the 'Campaign Against Living Miserably' on the door
Deptford-based artist Paul Malone takes you on a unique and controversial tour of the Universe.
→ Full info at se1.net/12503

Calder Bookshop

51 The Cut T 020 7620 2900
www.calderbookshop.com

Monday 14 May
INDEX ON CENSORSHIP: CALDER'S THEATRE OF LITERATURE

7pm; £7 (conc £5)
John Calder's once-a-month presentation. Trials & Tribulations:

Calder In Court, Last Exit To Brooklyn, Beckett's Defence Of Vaclav Havel, Lady Chatterley's Lover Trial and Lenny Bruce. In association with Cockpit Theatre.
→ Full info at se1.net/12078

Florence Nightingale Museum

St Thomas' Hospital T 020 7620 0374
www.florence-nightingale.co.uk

Thursday 17 May
FLORENCE NIGHTINGALE AND MARY SEACOLE: NURSE AND DOCTRESS

6.30pm; £12 from katie@florence-nightingale.co.uk or 020 7620 0374
Florence Nightingale and Mary Seacole were both important 19th-century figures, but Nightingale has been under attack for some 30 years, while Seacole is now being treated as "the real angel of the Crimean War". In this lecture Dr Lynn McDonald will explain the differences between these two women and their contributions, Nightingale as nurse, public health and hospital reformer, and Seacole as doctress, businesswoman, voluntary first aid worker and author.
→ Full info at se1.net/12467

Old Operating Theatre, Museum and Herb Garret

9a St Thomas Street T 020 7188 2679
www.thegarret.org.uk

Friday 18 May
SURGERY BY GASLIGHT

6pm, 7pm and 8pm; £9 (conc £8)
→ Full info at se1.net/12546

Saturday 19 May
OMINOUS APPARATUS: ANATOMY OF AN ARTIST

7pm; booking essential; free
Scottish contemporary sculptor Claire Barclay is working with the Old Operating Theatre for a special evening tour launching the museum's 50th anniversary celebrations. Medical objects and architecture will assume another dimension through the eyes and analysis of this futuristic compelling award winning artist. A show and tell tour presenting some of the most unusual medical objects once used within this unique hospital's remains.
→ Full info at se1.net/12547

Southwark Cathedral

London Bridge T 020 7367 6700
www.southwarkcathedral.org.uk

Thursday 3 May
REBELS WITH A CAUSE? YOUNG PEOPLE IN CONTEMPORARY SOCIETY

Garry Weston Library; 7pm-8.30pm; free
Public forum with Kids Company founder Camila Batmanghelidjh, Live Magazine editor Celeste Houliker and Natalie Ross from the Prince's Trust.
→ Full info at se1.net/12469

St John's Waterloo

73 Waterloo Road T 020 7633 9819
www.stjohnswaterloo.org

Tuesday 8 May
I WAS IN PRISON...

6pm; free
Talk by Dame Anne Owers, chair of Christian Aid and formerly HM

Inspector of Prisons: Part of The Isaiah Community's 'Just Good Friends?' season of reflections on friendship, justice and spirituality. The Isaiah Community meets every Tuesday at 6pm to pray for love and justice in the world.
→ Full info at se1.net/12425

Tuesday 15 May
LOVE YOUR NEIGHBOUR: JUSTICE FOR AN UNJUST WORLD

6pm; free
Talk by Sarah Henderson, SPEAK Network. Part of The Isaiah Community's 'Just Good Friends?' season of reflections on friendship, justice and spirituality.
→ Full info at se1.net/12426

Tuesday 22 May
OLYMPIC PEACE: A VISION OF FRIENDSHIP

6pm; free
Talk by Catriona Robertson, London Boroughs Faiths Network. Part of The Isaiah Community's 'Just Good Friends?' season of reflections on friendship, justice and spirituality.
→ Full info at se1.net/12427

Tuesday 29 May
UBUNTU: I AM WHAT I AM BECAUSE OF WHO WE ALL ARE

6pm; free
Talk by Revd Joanna Udal, Archbishop's Secretary for Anglican Affairs. Part of The Isaiah Community's 'Just Good Friends?' season of reflections on friendship, justice and spirituality.
→ Full info at se1.net/12428

The Old King's Head

Kings Head Yard, 45-49 Borough High Street T 020 7407 1550
www.theoldkingshead.co.uk

Thursday 10 May
THE LIFE AND TIMES OF WILLIAM LILLY

8pm; £2.50 (conc £1.50)
Nigel Hoyle talks about the colourful life of William Lilly, one of the foremost astrologers of the 17th century. A South East London Folklore Society event.
→ Full info at se1.net/12556

Waterloo Library

114-118 Lower Marsh T 020 7926 8750
www.lambeth.gov.uk

Monday 14 May
THE LEGACY OF EDEN WITH NELLE DAVY

7pm; book on 020 7926 1075 or email readersandwriters@lambeth.gov.uk; free
Nelle is an exciting new voice in the UK literary world. Having used education to escape an abusive and impoverished childhood she has gone on to carve a career for herself in the publishing world. Her debut novel is described as a wonderfully Gothic read and has received high praise. A Lambeth Readers' & Writers' Festival event.
→ Full info at se1.net/12358

Woolfson & Tay

12 Bermondsey Square T 020 7407 9316
www.woolfsonandtay.com

Friday 11 May
LIFE STORIES CAFE

7pm; £5

MC Dorothea Smartt and five guest artists share personal stories and images on the topic 'womb'. Featuring cabaret artist Marcus Reeves, poet Malika Booker, editor and publisher Kadija (George) Sesay, performance poet Zena Edwards, and Patrick McIntosh.
→ Full info at se1.net/12514

Guided walks

Archbishop's Park

Carlisle Lane

Thursday 24 May
ARCHBISHOP'S PARK WALK

7.30pm; £3 donation to Friends; booking essential 020 7021 1600 l.reynolds@coinstreet.org
Join the Friends of Archbishop's Park for a one hour guided tour exploring the heritage of this lovely Victorian park.
→ Full info at se1.net/12454

Tuesday 29 May
SPRING HISTORY WALK

Meet 11am outside Lambeth Palace gateway; free
Take a stroll through the park in the company of Lambeth's archivists. This one-hour tour through the park and the surrounding streets takes in the history of Lambeth's church and palace and the links with the poet and artist William Blake who lived close by.
→ Full info at se1.net/12465

Bermondsey Underground Station

Jamaica Road

Sunday 27 May
BERMONDSEY'S BLITZ

11am; £8; booking essential info@blitzwalkers.co.uk
Join Neil Bright for a guided walk exploring the tragedy and heroism of one of London's most heavily bombed boroughs.
→ Full info at se1.net/12365

St Thomas' Hospital

Westminster Bridge Road
www.guysandstthomas.nhs.uk

Friday 18 May
HISTORICAL TOUR OF ST THOMAS' HOSPITAL

10.30am; £3; booking essential 020 7021 1600 or email l.reynolds@coinstreet.org
Led by Wendy Mathews. Participants must be able to use the stairs.
→ Full info at se1.net/12508

Comedy

The Horse

122-124 Westminster Br Rd T 020 7928 6277
www.horsebar.co.uk

Friday 11 May
WHY THE LONG FACE?

8pm; free
Free Friday night entertainment with Gagster's Paradise. Stephen Bailey, Jim Campbell, Samantha Hannah, Jon Williams, Richard Todd, Tom Davis, Damien St John, Andrew West, Simon Caine and Steph Peart. MC: Barry Ferns.
→ Full info at se1.net/12256

Get your advert
in this space
next month

Prices from £25

Call
020 7633 0766
now

SPANISH LESSONS

- Learn one to one/In small groups/ Tailor-made lessons
 - Qualified Spaniard – 20 years experience +
 - Testimonials available
- Raquel Hernandez 020 7407 1711
raquelarohanui@gmail.com

ELECTRICIAN
No job too small!
07850 767283
020 8761 6012
angelo@glennies.net

Pilates Classes – Monday, 6pm



British School of Osteopathy (BSO)
275 Borough High Street, SE1
Email: pilatespeace@hotmail.co.uk
<http://pilatespeace.blogspot.com>

Follow us
on Twitter
@se1

se16.com
for
ROTHERHITHE
BERMONDSEY
CANADA WATER
SURREY QUAYS

Friday 25 May
WHY THE LONG FACE?

8pm; free
Free Friday night entertainment with Gagster's Paradise. Ryan Cull, Darren Walsh, Pete Starr, Ian Smith, Alex Perry, Pete Dillon-Trenchard, Samantha Hannah, Andrew West, Simon Caine and Steph Peart. MC: Damien St John.
→ Full info at se1.net/12257

The Miller

96 Snowsfields
www.themiller.co.uk

Tuesday 1 May
HOPLA IMPROV COMEDY CLUB

8pm-10pm; £5
Improvised musical from Music Box, followed by improvised storytelling from Story Bag.
→ Full info at se1.net/12399

Music

1901 Arts Club

7 Exton Street T 020 7620 3055
www.1901artsclub.com

Wednesday 16 May
LUNCHTIME RECITAL

1pm; £7.50 (booking essential)
Jessica Zhu (piano). Part of the Philharmonia Orchestra's Martin Musical Scholarship Fund lunchtime recital series.
→ Full info at se1.net/11814

Southwark Cathedral

London Bridge T 020 7367 6700
www.southwarkcathedral.org.uk

Friday 25 May
ULLERN CHAMBERCHOIR

7.30pm; free
The Oslo choir performs a cappella music by famous Norwegian composers from the romantic era represented by Grieg, via traditional Norwegian folk music to contemporary church music.
→ Full info at se1.net/12357

Saturday 26 May
A TALE OF TWO CITIES: VOICES OF LONDON AND FLORENCE

7.30pm; £20, £18, £15
London Oriana Choir's concert will feature music by Orlando Gibbons, Morten Lauridsen, John Harle, Lionel Bart, Giles Swayne, Eric Whitacre, Ian Stephens and Ralph McTell. An exploration of city life over the centuries, focusing on Florence and London.
→ Full info at se1.net/12555

St George the Martyr

Borough High Street T 020 7357 7331
www.stgeorge-themartyr.co.uk

Thursday 17 May
LUNCHTIME RECITAL

1pm-1.40pm; free
Piano and cello recital including works by Chopin and Shostakovich.
→ Full info at se1.net/12477

St John's Waterloo

73 Waterloo Road T 020 7633 9819
www.stjohnswaterloo.org

Thursday 10 May
RUSH HOUR CONCERT

6pm; free

Free after-work concert with Southbank Sinfonia. Enjoy a complimentary glass of wine while you listen. Sb5 performs an uncondacted programme alongside principal players of the Academy of St Martin in the Fields.
→ Full info at se1.net/12298

Thursday 17 May
RUSH HOUR CONCERT

6pm; free
A tribute to jazz pioneer Michael Garrick with musicians from the Guildhall School of Music and Drama jazz department.
→ Full info at se1.net/12299

Friday 18 & Saturday 19 May
ARDENTE OPERA

7.30pm; £22 (conc £18; student £10)
A programme to mark the 150th anniversary of the birth of Frederick Delius. Alexander Soares performs the revised three-movement version of the Piano Concerto, followed by a concert performance of the composer's final opera, Fennimore and Gerda, in Philip Heseltine's English translation. Conducted by Julian Black.
→ Full info at se1.net/12496

Thursday 24 May
RUSH HOUR CONCERT

6pm; free
Free after-work concert with Southbank Sinfonia. Enjoy a complimentary glass of wine while you listen.
→ Full info at se1.net/12300

Saturday 26 May
THE BEST OF BRITISH

7.30pm; £12 (under-19s £5)
Philharmonia Britannica.
→ Full info at se1.net/12493

Potters Fields Park

Tooley Street
www.pottersfields.co.uk

Friday 18 May
UNIVERSITY OF SOUTHERN CALIFORNIA TROJAN MARCHING BAND

4.30pm-5.30pm; free
One-hour programme of popular music performed by a top marching band.
→ Full info at se1.net/12470

Dance

Woolfson & Tay

12 Bermondsey Square T 020 7407 9316
www.woolfsonandtay.com

Friday 25 May
SHIM SHAM TAP JAM: HAPPY BIRTHDAY BOJANGLES

7pm; £7
Join Nada, Avalon and other tap dancers for a special tribute to Bill 'Bojangles' Robinson and International Tap Day.
→ Full info at se1.net/12522

Theatre

Menier Chocolate Factory

51 Southwark Street T 020 7907 7060
www.menierchocolatefactory.com

Until Saturday 12 May
EDUCATING RITA

Tue-Sat 8pm; Thu, Sat & Sun 3.30pm; £29.50
Matthew Kelly and Claire Sweeney star in Willy Russell's modern classic, directed by Tamara Harvey.
→ Full info at se1.net/12250

Wednesday 30 May to Sunday 12 August
TORCH SONG TRILOGY

Tue-Sat 8pm; Sat & Sun 3.30pm; £29.50; meal deal £37.00
Harvey Fierstein's comedy-drama tells the poignant story of an outsider's search for love and acceptance. With David Bedella and Sara Kestelman. Directed by Douglas Hodge.
→ Full info at se1.net/12482

National Theatre

South Bank T 020 7452 3000
www.nationaltheatre.org.uk

Until Monday 28 May
MISTERMAN

Lyttelton Theatre; In repertoire; £12-£40
UK premiere of Enda Walsh's play.
→ Full info at se1.net/12563

Wednesday 2 May to Saturday 2 June
TRAVELLING LIGHT

Lyttelton Theatre; In repertoire; £12-£47.50
Nicholas Wright's new play is a funny and fascinating tribute to the Eastern European immigrants who became major players in Hollywood's golden age. With Anthony Sher as Jacob.
→ Full info at se1.net/12561

Until Saturday 9 June
MOON ON A RAINBOW SHAWL

Cottesloe Theatre; In repertoire; £12-£32
Errol John's play, written in 1953, depicts a vibrant, cosmopolitan Trinidad that is as harsh as it is filled with colour and warmth.
→ Full info at se1.net/12564

Until Saturday 23 June
COLLABORATORS

Olivier Theatre; In repertoire; £12-£32
John Hodge's play set in Stalin's Russia. Alex Jennings plays Bulgakov and Simon Russell Beale, Stalin.
→ Full info at se1.net/12562

Wednesday 23 May to Saturday 21 July
ANTIGONE

Olivier Theatre; In repertoire; £12-£32
By Sophocles, in a version by Don Taylor. Jodie Whittaker plays Antigone and Christopher Eccleston is Creon.
→ Full info at se1.net/12565

Rose Theatre Exhibition

56 Park Street T 020 7261 9565
www.rosetheatre.org.uk

Until Friday 4 May
THE COMEDY OF ERRORS

Tue-Sat 7.30pm; Sun 3pm; £12 (conc £10) from 020 7261 9565 or boxoffice@rosetheatre.org.uk

→ Full info at se1.net/11994

Tuesday 8 May to Friday 1 June
SAINT JOAN

Tue-Sat 7.30pm; Sun 3pm; £12 (conc £10) from 020 7261 9565 or boxoffice@rosetheatre.org.uk

By George Bernard Shaw. This production celebrates the 600th anniversary of the birth of Joan of Arc.
→ Full info at se1.net/11995

Shakespeare's Globe

New Globe Walk T 020 7401 9919
www.shakespearesglobe.com

Until Saturday 9 June
GLOBE TO GLOBE

times vary; tickets from £5
37 international companies will present all 37 of Shakespeare's plays in 37 different languages.
→ Full info at se1.net/12545

Southwark Playhouse

Shipwright Yard T 020 7407 0234
www.southwarkplayhouse.co.uk

Until Saturday 5 May
BLACK FIGHTS WITH DOGS

The Vault; Mon-Sat 7.30pm; Sat 3pm; £9, £13, £17
This production is the first London revival of Bernard-Marie Koltes' play in over 20 years. Translated by David Bradby and Maria M Delgado. Directed by Alexander Zeldin.
→ Full info at se1.net/12242

Until Saturday 12 May
 SOMEONE WHO'LL WATCH OVER ME

Mon-Sat 7.45pm; Sat 3.15pm; £10/£14/£18
20th anniversary production of Frank McGuinness's play with Billy Carter as Edward, Robin Soans as Michael and Joseph Timms as Adam. Directed by Jessica Swale.
→ Full info at se1.net/12404

Wednesday 16 May to Saturday 9 June
THE HAIRY APE

Mon-Sat 7.45pm; Sat 3.15pm; £10, £14, £18
With unflinching theatrical force and explosive lyricism, Eugene O'Neill explores the tragedy of a forgotten voice and the perennial human need to belong. In its first major London revival in 25 years, *The Hairy Ape* offers a startlingly relevant story in an atmospheric and muscular new production, directed by Kate Budgen.
→ Full info at se1.net/12243

The Old Vic

103 The Cut T 0844 871 7628
www.oldvictheatre.com

Until Saturday 9 June
THE DUCHESS OF MALFI

Mon-Sat 7.30pm; Wed & Sat 2.30pm; £12-£49.50
Eve Best returns to The Old Vic in John Webster's Jacobean tragedy directed by Jamie Lloyd. Webster's poetic masterpiece tells the dark and bloody story of the recently widowed Duchess as she struggles to retain strength and dignity in the face of death.
→ Full info at se1.net/12314

[SE1 Direct]

Every Monday more than 7,200 people receive our weekly email briefing.

Find out what happened in SE1 last week and what's happening during the week ahead.

Sign up now at www.SE1direct.co.uk

londonSE1
community website

Some recent forum topics

- Packing/moving boxes**
- Trinity Street scaffolding
- London Dungeon**
- Mobile phone reception
- Literacy or Litter?**
- Colorama buildings
- Faraday Memorial**
- Primary school palavar**
- Elephant Air Quality
- Manna Ash House**

..and dozens more topics

join the debate at
www.London-SE1.co.uk

The Old Vic TunnelsLeake Street
oldvictunnels.comSunday 20 to Sunday 27 May
EPIDEMIC

7pm; Sat & Sun 2.30pm; epidemic@oldvictheatre.com to be notified when tickets are available; free

In this extraordinarily ambitious community project on obesity and mental health, based on interviews with over 250 Londoners, Old Vic New Voices (OVNV) has assembled a company of more than 120 volunteers aged 16 to 60 from across London, from first time performers to novice backstage and technical staff. Ten new songs referencing Ska, reggae, gospel and jazz will collide with contemporary dance by emerging choreographer John Ross. Book and lyrics by Morgan Lloyd Malcolm. Music and Lyrics by Suzy Davies. Based on an original concept by Steve Winter. Directed by Alexander Ferris.

→ Full info at se1.net/12548**Unicorn Theatre**147 Tooley Street T 020 7645 0560
www.unicorntheatre.comUntil Saturday 19 May
HOW TO THINK THE UNTHINKABLEtimes vary; £15 (children £10; conc £12)
Ryan Craig's visceral new play captures the passion, danger and moral deadlock of the story of Greece's most famous teenager. Set in the aftermath of a bloody civil war, Antigone fights for what she believes is right. Is it right to question or defy those in authority when we know they're wrong?→ Full info at se1.net/12559Until Sunday 20 May
THE MAN WITH THE DISTURBINGLY SMELLY FOOTtimes vary; £15 (children £10; conc £12)
Based on the Greek classic by Sophocles, specially adapted for young audiences by Nancy Harris and directed by Ellen McDougall. Is it best to be truthful and risk not getting something, or trick the other person in to doing what you think is right?→ Full info at se1.net/12558**Union Theatre**204 Union Street T 020 7261 9876
www.uniontheatre.bizUntil Saturday 12 May
BABES IN ARMSTue-Sat 7.30pm; Sun 2pm & 6pm; £18
Set in a 1950s Summer stock theatre, Babes in Arms follows a young group of apprentices as they try to mount a musical revue. A show full of humour and heart.→ Full info at se1.net/12283Wednesday 16 May to Saturday 16 June
JEKYLL AND HYDETue-Sat 7.30pm; Sun 2pm & 6pm; £20 (conc £18)
Set in London, and based on Robert Louis Stevenson's Victorian novella, it is the story of Dr Henry Jekyll, a brilliant and yet troubled scientist, and his obsession with the darkest recesses of the human condition. Morphic Graffiti's production promises to uncover the grit

and depravity of Stevenson's vision. The results will be a thrilling and, at times, terrifying ordeal.

→ Full info at se1.net/12369**Waterloo East Theatre**Brad Street T 020 7928 0060
www.waterlooeast.co.ukTuesday 8 to Sunday 27 May
THE BEEKEEPERTue-Sat 7.30pm; Sun 4pm; £15 (conc £12); Fri 11 pay what you can night
Blackeyed Theatre presents the world premiere of Michael Ashton's play directed by Adrian McDougall. Based on real life at Auschwitz, this is the incredible story of two men, the nature of power and the strength of the human spirit.→ Full info at se1.net/12475**Young Vic**66 The Cut T 020 7928 6363
www.youngvic.orgUntil Sunday 13 May
WILD SWANSTimes vary; £10-£29.50
This first-ever stage version brings together Jung Chang with playwright Alexandra Wood, director Sacha Wares, designer Miriam Buetner and Beijing video artist Wang GongXin. Full review at www.London-SE1.co.uk→ Full info at se1.net/11790Monday 21 May to Tuesday 12 June
THE SUITTimes vary; £10-£29.50
In the dusty heat of a 1950s South African township, a young worker returns home to find his wife in bed with her lover. The lover escapes, leaving behind his suit. The only revenge the husband takes is to instruct his wife to treat the suit as an honoured guest. But how long can she endure this cruel and pitiless sentence? Directors Peter Brook and Marie-Helene Estienne team up with a company of international actors, singers and musicians to recreate Can Themba's hauntingly beautiful fable.→ Full info at se1.net/11791**Cinema****Coin Street Neighbourhood Centre**
108 Stamford Street T 020 7021 1600
www.coinstreet.orgFriday 18 May
THE GARDEN: COIN STREET NEIGHBOURHOOD FILM CLUB7.30pm (refreshments from 7pm); £4 inc refreshments
From the ashes of the Los Angeles riots arose a lush, 14-acre community garden, the largest of its kind in the United States. Now bulldozers threaten its future. Documentary exploring the struggle between urban farmers and the City of Los Angeles and a powerful developer. Contact Laura Reynolds for more information on 020 7021 1600 or email l.reynolds@coinstreet.org→ Full info at se1.net/12505**Exhibitions****Anise Gallery**13a Shad Thames T 020 7403 9938
www.anisegallery.co.uk
Sat & Sun 10am-6pm; freeUntil Sunday 20 May
SOCIETY OF ARCHITECTURAL ILLUSTRATION

More than 40 pieces of work from 25 artists spanning techniques from traditional watercolours and pencil sketches through to photography and computer-generated images.

→ Full info at se1.net/12518**Architecture Foundation**Magdalen House, 136-148 Tooley Street T 020 7084 6767
www.architecturefoundation.org.uk
Tue-Sat 12 noon-6pm; freeWednesday 9 May to Saturday 9 June
SHIFTS: BOOM, BUST AND BEYOND

An evocative, polemical exhibition illustrating the far-reaching impacts of new economic circumstances on architecture's recent past, troubled present and unknown future.

→ Full info at se1.net/12519**ASC Gallery**Erlang House, 128 Blackfriars Road
Mon-Sat 1.30pm-5pm; freeUntil Thursday 3 May
NICK TURVEYWindowSpace; 24 hours
A confrontational installation, titled "Do I Know You?", hacks the mechanisms of spatial control to reveal the faultlines opening in political space.→ Full info at se1.net/12472Until Friday 18 May
APPLE AND PEAR: JOHANN ARENS
A new installation by emerging artist Johann Arens.→ Full info at se1.net/12364**Bankside Gallery**48 Hopton Street T 020 7928 7521
www.banksidegallery.com
Daily 11am-6pm; freeWednesday 2 to Monday 7 May
SNAP!: WOMEN ARTISTS WORKING TOGETHER

South London Women Artists (SLWA) present the second major exhibition of members' work which will cross reference contemporary female art with the history of feminism.

→ Full info at se1.net/11111Friday 11 May to Saturday 9 June
ROYAL SOCIETY OF PAINTER-PRINTMAKERS: ANNUAL EXHIBITION

Prints made using the long established processes of etching and relief printing to the more contemporary uses of photographic and digital technology.

→ Full info at se1.net/11112**Bermondsey Project Space**46 Willow Walk
www.bowarts.org/studios/se1-studios
Thu-Sun 1pm-6pm; freeUntil Sunday 13 May
DAVE PEARSON: BYZANTIUM AND BEYOND

When the artist Dave Pearson died in 2008 he left behind a colossal body of work - well over 15,000 paintings, drawings and prints - in a ramshackle studio in Lancashire. For months after his death the fate of the work hung in the balance, but a small group of his friends and family were determined to rescue it from destruction and oblivion. They formed a trust to acquire and restore the studio and to preserve and make accessible this important work, much of which has never been exhibited.

→ Full info at se1.net/12373Friday 25 May to Sunday 17 June
NATURE TRANSLATED: CHARLES MARCH

Charles March - who under the name Charles Settrington was a leading advertising photographer - marks his return to photography with this exhibition.

→ Full info at se1.net/12557**Bicha Gallery**7 Gabriel's Wharf T 020 7928 0083
www.bicha.co.uk
Tue-Sun 11am-7pm; freeFriday 25 May to Sunday 17 June
SIGNALS

Signals, Colin McCullum's exhibition of new paintings, refers to the subliminal and visual overload of our consumer society. The work is inspired by the collective experience of contemporary living.

→ Full info at se1.net/12523**Cuming Museum**151 Walworth Road SE17 T 020 7525 2332
www.southwark.gov.uk/cumingmuseum
Tue-Sat 10am-5pm; free

Tuesday 22 May to Saturday 27 October

FACT INTO FICTION: CHARLES DICKENS - A SOUTHWARK CHILDHOOD

Dickens's experiences of the Borough area during his time there in 1824. The places, people and living conditions he experienced during his short time in the area provided inspiration and context to many characters and narratives in his later writing. The exhibition explores these key locations, such as the Marshalsea Prison, St George the Martyr Church and Mint Street workhouse and how they influenced his novels. The exhibition will use objects, artworks and illustrations from the museum's collection to map Dickens's experiences and how they informed his writing.

→ Full info at se1.net/12214**Design Museum**Shad Thames T 0870 909 9099
www.designmuseum.org
Daily 10am-5.45pm (last admission 5.15pm); £10 (conc £9; students 6); Under 12s free

Tuesday 1 May to Sunday 8 July

CHRISTIAN LOUBOUTIN
Christian Louboutin's exquisite shoes, with their trademark glossy red soles, are a unique fusion of craftsmanship, engineering and sculpture. This exhibition is the first comprehensive presentation of Louboutin's work in the UK. It explores how, over the past twenty years, Christian Louboutin has transformed the design of the shoe.→ Full info at se1.net/11773Until Sunday 15 July
DESIGNS OF THE YEAR 2012
Showcasing the most innovative and progressive designs from around the world, spanning seven categories: Architecture, Fashion, Furniture, Graphics, Digital, Transport and Product. The Olympic Torch was last month chosen as the overall winner.→ Full info at se1.net/11772**Fashion & Textile Museum**83 Bermondsey Street T 020 7407 8664
www.ftmlondon.org
Exhibitions Tue-Sat 11am-6pm; £7 (conc £5); under-12s freeUntil Saturday 16 June
DESIGNING WOMEN: POST-WAR BRITISH TEXTILES

Beginning with Lucienne Day's Calyx pattern of 1951, featured at the Festival of Britain and moving through the 1960s and into the 1970s, this exhibition will explore a unique British brand of modernism that influenced the world. Over 100 works from the collection of Jill A Wiltse and H Kirk Brown will be on display.

→ Full info at se1.net/11753**gallery@oxo**Oxo Tower Wharf, T 020 7021 1686
www.coinstreet.org
Daily 11am-6pm; freeThursday 10 to Sunday 13 May
LONDON: A CELEBRATION
Handmade in Britain presents a selling exhibition showcasing work by British designer-makers.→ Full info at se1.net/12274Wednesday 16 May to Sunday 3 June
CULTURE IN STONE
The work of three artists who celebrate the art of Shona sculptures by combining ancient cultural heritage with aspects of contemporary life. Shona sculptures**Next month in SE1***Highlights include:*

- Queen's Diamond Jubilee
- London Festival of Architecture
- Open Garden Squares Weekend
- Poetry Parnassus
- Borough Road Gallery opens
- Sundowner at Tower Bridge
- Hike & Bike the Borough
- North Lambeth Parish Fete

next issue available Friday 1 June

are a timeless signature of the Shona movement, representing the people and culture of Zimbabwe. The three artists interpret themes of everyday life and comment on cultural barriers, as well as many aspects of life in the 21st century.
→ Full info at se1.net/12275

Garden Museum

Lambeth Palace Road T 020 7401 8865
www.gardenmuseum.org.uk
Daily 10.30am-5pm (closed 1st Mon of month); £7 (conc £6; under-16s free)

Until Sunday 24 June
GARDEN OPEN TODAY: 300 YEARS OF GARDEN VISITING
The story of our love affair with other people's gardens. From a travelling artist's sketch of Henry VIII's palace at Richmond - the earliest drawing of an English garden in existence - to Vita Sackville-West's private photographic albums of Sissinghurst, this exhibition explores the centuries-old British tradition of opening gardens to the public.
→ Full info at se1.net/12240

George and Jorgen

9 Morocco Street
www.georgeandjorgen.com
Wed-Fri 10am-6pm; Sat 11am-6pm; Sun 12 noon-5pm;

Thursday 3 to Sunday 27 May
WILL CORWIN: MOUNT ZION
The show explores the notion of prophesy through sculpture: the conceptual choices people make in choosing what they think divine communication will look like. He is interested in the objects often involved in revelation: tablets, talking bushes, angels, and in particular, the person involved in the revelation itself.
→ Full info at se1.net/12517

Hayward Gallery

Southbank Centre T 020 7921 0813
www.southbankcentre.co.uk/visualarts
Daily 10am-6pm (Thu & Fri till 8pm); £11 (seniors £10, students £8, under-16 £4.50; under 12 free)

Until Sunday 13 May
DAVID SHRIGLEY: BRAIN ACTIVITY
British artist David Shrigley is best known for his humorous drawings that make witty and wry observations on everyday life. Spanning the upper galleries of the Hayward Gallery, the show includes new artwork and site specific installations.
→ Full info at se1.net/11325

Until Sunday 13 May
JEREMY DELLER: JOY IN EVERYTHING
This mid-career survey provides a fresh overview of his multi-faceted work, in which he explores compelling social and cultural territories while alternately taking on the roles of artistic producer, publisher, filmmaker, collaborator, curator, parade organiser, and cultural archivist.
→ Full info at se1.net/11326

Imperial War Museum

Lambeth Road T 020 7416 5000
london.iwm.org.uk
Daily 10am-6pm; free

Thursday 24 May to Sunday 23 September
BUILD THE TRUCE
Explore the concept of truce, from challenging notions about the inevitability of war, through to truce as a method of conflict resolution and what it can mean on a practical level, such as allowing aid and medical organisations to enter areas of conflict which they cannot reach during periods of war.
→ Full info at se1.net/12532

Until Friday 30 November
WAR STORY: SERVING IN AFGHANISTAN
15 personal artefacts as well as digital screens packed with video footage, images and interviews.
→ Full info at se1.net/11695

Until Monday 31 December
A FAMILY IN WARTIME
Learn how rationing, evacuation, war work and events such as the Blitz and VE Day shaped everyday life and the story of a nation.
→ Full info at se1.net/12368

Jacob's Island Gallery

10-11 Shad Thames T 020 7407 8850
www.jacobisland.co.uk
Thu-Sun 12 noon-5pm;

Until Saturday 12 May
RESPONSIVE EYES
Anthony Antonellis, Paul B Davis, Thomas Lock, Sara Ludy, Mike Ruiz, Lucy Stokton, Mark Titchner, Artie Vierkant.
→ Full info at se1.net/12315

Lambeth Palace

Lambeth Palace Road
www.archbishopofcanterbury.org/palace

Tuesday 1 May to Saturday 14 July
ROYAL DEVOTION: MONARCHY AND THE BOOK OF COMMON PRAYER
Tue-Fri 11am-1.30pm & 2pm-5pm; Sat 11am-4pm (last entry 1 hour before closing); £12 (conc £10); under-17s free
This exhibition traces the close relationship between royalty and religion from medieval to modern times. It tells the story of the Book of Common Prayer and its importance in national life. This story is illustrated with books, manuscripts and objects, many of which have royal or other important provenances.
→ Full info at se1.net/12201

Llewellyn Alexander Fine Paintings

124-126 The Cut T 020 7620 1322
www.llewellynalexander.com
Mon-Sat 10am-7.30pm; free

Until Saturday 5 May
THE LONDON ART SHOW: PEOPLE, ARCHITECTURE & ATMOSPHERE
The city of 2012, its people, its architecture and its atmosphere, captured by artists who know and love one of the greatest capital cities of the world including Holly Brodie, Roy Connelly, Lisa Graa Jensen, Nancy Petley-Jones, Adrian Sykes, Yanko Tihov, Nadia Tsakova and Robert Wells.
→ Full info at se1.net/12139

Make Space Studios

Newnham Terrace
www.makespacestudios.co.uk

Thursday 17 to Sunday 20 May
BBC PHOTOGRAPHY CLUB
Simulator Gallery; Thu 12 noon-8pm; Fri: 12 noon-5pm, Sat: 11am-5pm; Sun 11am-4pm; £2
Fifth annual exhibition showcases a unique and varied portfolio of work achieved by club members during the last year.
→ Full info at se1.net/12468

More London Riverside

Tooley Street
www.morelondon.com

Until Sunday 13 May
WHAT ON EARTH? WALLBOOK OF SPORT
Produced in collaboration with the Telegraph it features more than 1,000 pictures and captions tracing the history of sport from the ancient Olympics in 776 BC to the present day. The reverse side features editorial highlights of the modern Olympic movement from 1896 to 2012, complete with Matt cartoons and a championship crossword.
→ Full info at se1.net/12471

Wednesday 16 May to Friday 1 June
TIME IN TURKEY
Open-air exhibition of photographs of Turkey.
→ Full info at se1.net/12553

National Theatre

South Bank T 020 7452 3000
www.nationaltheatre.org.uk
Foyers open Mon-Sat 9.30am-11pm; Sun 12 noon-6pm; free

Until Monday 4 June
FESTIVAL!
Images of festivals and celebrations around the world from the Corbis archive.
→ Full info at se1.net/12378

Until Saturday 9 June
NEW WORK BY HILARY ROSEN
Vibrant oil paintings depict the city at night illuminated by cars and the light spill from bars and clubs.
→ Full info at se1.net/12560

Nolia's Gallery

60 Great Suffolk Street T 020 7701 9111
www.noliassgallery.co.uk
Daily 1pm-6pm; free

Until Wednesday 2 May
NOBODY LIKES US: PHOTOGRAPHY AND FINE ART
Photography by Dean Adrian Tanner and illustration by Mate "Entenn" Jako.
→ Full info at se1.net/12409

Until Wednesday 2 May
MUSICIAN ON CAMERA
This includes work by David Sinclair, the original photographer for Ronnie Scott's. Also featured are pictures of Echo & the Bunnymen.
→ Full info at se1.net/12452

Friday 4 to Wednesday 9 May
BEAUTIFUL DAYS: HYE OCK JEON
Hye Ock Jeon developed her painting skills by herself starting at the age of 40. She is a member of Korean Fine Art Association (KFAA) and has had three solo exhibitions in Korea and many group exhibitions internationally.
→ Full info at se1.net/12451

Saturday 5 to Wednesday 9 May
BLACK IS WHITE, WHITE IS BLACK
A group exhibition of works from every angle of creativity. Curated by Nolia.
→ Full info at se1.net/12498

Saturday 12 to Wednesday 16 May
A WAKE
This exhibition is put together by a collective of artists in memory of creatives souls who are no longer with us.
→ Full info at se1.net/12499

Old Operating Theatre, Museum and Herb Garret

9a St Thomas Street T 020 7188 2679
www.thegarret.org.uk
Daily 10.30am-5pm; £5.90; conc £4.90; child £3.40; family (2+4) £13.80

Until Thursday 17 May
TALES OF MYSTERY & MEDICINE: ROBERTO LARI
Italian illustrator and graphic novel artist Roberto Lari exhibits a selection of his stylish gothic stories of phantoms and amputations.
→ Full info at se1.net/12392

Poppy Sebire Gallery

All Hallows Hall T 020 7928 3096
www.poppysebire.com
Tue-Sat 10am-6pm; free

Until Saturday 5 May
BOO RITSON: ON THE WAY TO THE OCEAN
A series of mixed media works that investigate the relationship of identity and representation to place.
→ Full info at se1.net/12350

Friday 11 May to Saturday 16 June
GEORGIE HOPTON: THE WOUNDED TULIP
In Georgie Hopton's multifarious practice she considers the fecund and the dying with a lightness of heart and a touch of dark humour.
→ Full info at se1.net/12512

Siobhan Davies Studios

85 St George's Road
www.siobhandavies.com
Mon-Thu 10am-8pm; Fri & Sat 10am-5pm; free

Friday 4 May to Sunday 1 July
ANIMATED ENVIRONMENTS: PART 2 - GRAHAM GUSSIN
Solo exhibition focusing on painting, photography and film as platforms for performance.
→ Full info at se1.net/12515

Southwark Cathedral

London Bridge T 020 7367 6700
www.southwarkcathedral.org.uk
Refectory Mon-Fri 8.30am-6pm; Sat & Sun 10am-6pm; free

Until Friday 18 May
MICHAEL GRATER: A RETROSPECTIVE
Original drawings from books by the late children's illustrator.
→ Full info at se1.net/12232

Saturday 19 May to Saturday 30 June
CITY LIGHTS: JOHN DUFFIN
John Duffin is one of the leading printmakers and painters in Britain. New work focusing on London tube and rail stations and city vistas all depicted in the unique overhead viewpoints Duffin is acclaimed for.
→ Full info at se1.net/12552

Tate Modern

Bankside T 020 7887 8888
www.tate.org.uk/modern
Sun-Thu 10am-6pm; Fri & Sat 10am-10pm; free

Until Sunday 13 May
NO LONE ZONE
The exhibition takes its name from a military term designating an area where the presence of just one person is not allowed.
→ Full info at se1.net/12304

Until Sunday 27 May
ALIGHIERO BOETTI: GAME PLAN
£10 (conc £8.50)
The first large-scale retrospective of Boetti's work to be held outside Italy in over a decade.
→ Full info at se1.net/12053

Until Tuesday 5 June
YAYOI KUSAMA
£10 (conc £8.50)
Yayoi Kusama's pioneering work spans over six decades and this exhibition highlights the artist's moments of most intense innovation.
→ Full info at se1.net/12052

Until Sunday 9 September
DAMIEN HIRST
£14 (conc £12.20)
The first substantial survey of Damien Hirst's work ever held in the UK.
→ Full info at se1.net/11290

Unit 24

20 Great Guildford Street T 020 7401 2142
unit24.info
Mon-Wed 10am-5pm, Thu & Fri 10am-6.30pm;

Until Saturday 12 May
PHOTO-SOUP
A collaborative project that allows artists to disseminate their work and ideas without the need to fit mainstream curatorial agendas.
→ Full info at se1.net/12525

Vitrine Gallery

Bermondsey Square
www.vitrinegallery.co.uk
24 hours; free

Thursday 3 to Monday 14 May
EDDIE PEAKE: BIRTHDAY PARTY
A 'performing' installation constructed from neon and print works.
→ Full info at se1.net/12385

White Cube Bermondsey

144-152 Bermondsey Street T 020 7930 5373
www.whitecube.com
Wed-Sat 10am-6pm; Sun 12 noon-6pm; free

Until Saturday 12 May
GILBERT & GEORGE: LONDON PICTURES
Featuring works based on *Evening Standard* billboards.
→ Full info at se1.net/12280

Until Saturday 12 May
LIU WEI
Beijing-based artist.
→ Full info at se1.net/12420

Until Saturday 12 May
MADEIN COMPANY
Artists' collective founded by Shanghai-based artist Xu Zhen.
→ Full info at se1.net/12421

Woolson & Tay

12 Bermondsey Square T 020 7407 9316
www.woolsonandtay.com
Mon-Sat 11am-7pm; Sun 11am-5pm;

Tuesday 1 to Sunday 27 May
A TO Z - AN ALPHABET
Jane Colling presents her latest series of original screenprints.
→ Full info at se1.net/12520

OPPORTUNITIES FOR ARTISTS

Mayor seeks Southwark talent for riverside Olympics festival

The Mayor of London has launched a search for artists, companies and community groups to perform at 'PICTURE: Potters Fields', the free festival to be held in the park next to Tower Bridge during the Olympic and Paralympic Games.

"PICTURE: Potters Fields will be a small, non-ticketed outdoor event offering families, visitors and the local community the opportunity to watch the best action from the Olympic and Paralympic Games for free live on a big screen," says the Greater London Authority on its website.

"Visitors can grab a bite to eat, take in the beautiful view of London's iconic Tower Bridge and watch roving entertainment whilst they soak up the atmosphere in Potters Fields Park."

The Mayor has dropped an earlier proposal to rebrand the riverside gardens as "London Park" for the duration of the event.

According to documents recently published by City Hall, the GLA has paid the Potters Fields Park Management Trust just £1 for the use of the prime open space from mid-July to mid-September. However, under the terms of the hire agreement, the hirer will have to meet a wide range of costs including security, litter removal and making good any damage to the park.

The PICTURE: Potters Fields event will be open daily 10am-10pm during the Olympics (Saturday 28 July to Sunday 12 August) and Paralympics (Wednesday 29 August to Sunday 9 September).

Prospective performers have until 8 May to submit their outline application. The theme is 'The Best of London' and although groups and individuals from around the capital can apply, the GLA says that submissions from Southwark will be particularly welcome

• See www.london.gov.uk/picture



RIVER THAMES

HMS Belfast to reopen

HMS Belfast – which has been closed to the public since the ship's gangway collapsed into the Thames last November – will reopen on Friday 18 May.

The structure collapse because a subcontractor "cut through the structure of the gangway without sufficient support", according to a statement issued by Imperial War Museums (IWM).

Curators have organised a weekend of free events on 26 and 27 May to celebrate the reopening.

"HMS Belfast shows first hand what it was like to live and work on board a warship," says director Phil Reed. "Since her arrival on the Thames, more than 40 years ago, she has grown to be a national symbol of the efforts and endurance of sailors who took part in the Arctic Convoys, D-Day, the Cold War and Korea.

"London hasn't been the same in the six months that the iconic HMS Belfast has been closed. Its reopening has been a long time coming and is a cause for great celebration. And that is what we plan to do – celebrate, with all manner of exciting, fun and engaging activities and attractions on board."

The collapsed section of gangway was lifted out of the river last December. The new brow will be installed early this month.

On Wednesday 9 May the Duke of Gloucester will attend a Victory Day ceremony dedicated to the Arctic Convoys in the Second World War. Gun salutes will be fired at 4.20pm and 7.20pm.

The Princess Royal is due to visit the ship on Thursday 31 May as patron of the Special Forces Club and commandant-in-chief of the First Aid Nursing Yeomanry.

LondonSE1
community website**Southwark Labour vows to oppose parish council plans**

A row has broken out between Liberal Democrat and Labour councillors over proposals to create parish councils in Bermondsey, Borough & Bankside.

...more at www.London-SE1.co.uk/n5974

Giles Fraser welcomed to Elephant & Castle parish

Former St Paul's Cathedral canon chancellor Giles Fraser has been licensed as priest-in-charge of St Mary Newington - a parish which includes the Strata tower and the Elephant & Castle Shopping Centre.

...more at www.London-SE1.co.uk/n5971

London Dungeon to quit Tooley Street for County Hall

A proposal to relocate the London Dungeon to the former home of London government at County Hall on the South Bank has been approved by Lambeth Council.

...more at www.London-SE1.co.uk/n5969

Work begins on Guy's Tower

Preliminary works for the re-cladding of the Guy's Hospital tower have begun and NHS bosses have signed the contracts for the transformation of the 34-storey building.

...more at www.London-SE1.co.uk/n5968

Mary Seacole statue approved

Plans for a statue of Mary Seacole to be erected in the grounds of St Thomas' Hospital have been approved Lambeth Council despite opposition from leading medical and nursing figures.

...more at www.London-SE1.co.uk/n5967

Tate Modern's oil tanks to open for 15-week summer festival

The former oil tanks of Bankside Power Station will this summer host a 15-week festival of live art, performance, installation and film art as work continues on the construction of the modern art gallery's extension.

...more at www.London-SE1.co.uk/n5964

Helicopter to drop 100,000 poems on South Bank

100,000 bookmarks printed with the text of poems will be dropped by helicopter onto Jubilee Gardens on the South Bank this summer to launch the world's largest ever gathering of poets.

...more at www.London-SE1.co.uk/n5960

King's Reach Tower: "harmful and unsympathetic" giant ads blocked

Plans to turn a vacant high-rise office building on the South Bank into one of the biggest advertisement hoardings London has ever seen have been rejected by Southwark Council.

...more at www.London-SE1.co.uk/n5959

Blackfriars river collision report: new call for booze limit

The Marine Accident Investigation Branch has published its report on a collision between a Thames Clippers catamaran and a rigid inflatable boat on the Thames near Blackfriars Bridge last summer.

...more at www.London-SE1.co.uk/n5957

Lancaster Street's Colorama buildings could be demolished

Two warehouse buildings at the junction of Lancaster Street and Library Street - - could be demolished if plans for a new development of 39 homes are approved by Southwark Council.

...more at www.London-SE1.co.uk/n5956

Building firm fined £20,000 after 380kg load falls on woman at bus stop

A building company has been fined £20,000 for a breach of the Health and Safety at Work Act after a woman was injured while she waited at a bus stop in York Road near Waterloo Station.

...more at www.London-SE1.co.uk/n5950

Waterloo Station 'cycle hub' to open before Olympics

A 'cycle hub' offering secure parking along with bicycle sales, hire and repair will open at Waterloo Station before the start of the Olympic Games at the end of July, transport minister Norman Baker has confirmed.

...more at www.London-SE1.co.uk/n5947

Council says sorry for late-night window cleaning

Southwark Council has apologised to residents of Tooley Street after their sleep was disturbed by window cleaning at the authority's headquarters in the early hours of the morning.

...more at www.London-SE1.co.uk/n5946

News you may have missed**Tower Bridge Road payday loan shop plan blocked**

A bid to open a controversial payday loan shop in Tower Bridge Road has been halted.

...more at www.London-SE1.co.uk/n5945

Elephant Leisure Centre to close in June

The Elephant & Castle Leisure Centre will close in June in preparation for the demolition of the building and redevelopment of the site, a senior council officer has said.

...more at www.London-SE1.co.uk/n5943

St Mary Magdalen Churchyard reopened

St Mary Magdalen Churchyard was officially reopened last month after a six-month closure for the first phase of restoration and improvement works.

...more at www.London-SE1.co.uk/n5936

Bankside's last derelict warehouse to be redeveloped

Plans to transform the derelict Empire Warehouse in Bear Gardens, Bankside, into an 8-storey 60-room apart-hotel have been approved by councillors despite vociferous objections from neighbours.

...more at www.London-SE1.co.uk/n5927

29-storey development planned for Waterloo's Elizabeth House

David Chipperfield Architects have unveiled their latest proposals for the redevelopment of the Elizabeth House site in York Road next to Waterloo Station.

...more at www.London-SE1.co.uk/n5916