

THIS MONTH: the most comprehensive guide to local events in January p3-p7
 Alternative health on the South Bank p7 • Books by local authors reviewed p8

January 2007
in **SE1**
Issue 103 **FREE**

STEEL & SHAMASH
 THE WATERLOO COMMUNITY SOLICITORS

We can help with all your legal problems

- Property ■ Family ■ Children
- Housing ■ Criminal

For a friendly professional service
 Only two minutes from Waterloo Station

Contact Steel & Shamash
 12 Baylis Road • Waterloo • London • SE1 7AA
 Tel: 020 7803 3999
 Email: mail@steelandshamash.co.uk

2007 in SE1

This year already looks set to be a time when several initiatives come to fruition and important anniversaries are celebrated.

Next month sees the relaunch of the National Film Theatre under Waterloo Bridge as BFI Southbank. The BFI has transformed the space formerly occupied by the Museum of the Moving Image to create a new foyer, cafe and exhibition space.

The following month the Royal Academy of Arts will be showing a painting of Waterloo Bridge as a major feature of its Unknown Monet show, the first exhibition devoted to Monet's drawings and pastels.

In the spring Bankside Open Spaces Trust is expected to publish a business plan for The Mint, a new green space on the site of Mint Street Adventure Playground next to Mint Street Park.

In April Borough Market will have more national exposure when UKTV's *The Market Kitchen* is broadcast from a kitchen in the market. Presenters include Clarissa Dickson-Wright, Tana Ramsey and Tom Parker-Bowles.

Expansion comes to the Jerwood Space this summer with the opening of its extension designed by architects Munkenbeck & Marshall.

Stage 1 of the Tour de France on Sunday 8 July will start in The Mall and cross Westminster Bridge.

The route then follows York Road, Chicheley Street, Belvedere Road and Upper Ground to Blackfriars Bridge. The Grand Depart then takes in St Paul's Cathedral before returning south across Tower Bridge and heading east along Tooley Street and Jamaica Road to Canterbury.

The Coin Street Neighbourhood Centre in Stamford Street is expected to open in September with accommodation for the Family & Children's Centre. Other facilities include meeting rooms, a learning and enterprise support centre and a community café.

William Blake, who lived in Hercules Road, was born 250 years ago this autumn and the Hayward Gallery is producing a book *Mind-Forge'd Manacles: William Blake and Slavery* highlighting his links to the anti-slavery movement which also has its anniversary this year.

Southwark Cathedral is due to mark several important anniversaries including 400 years since the baptism of John Harvard. The November anniversary will be marked by a celebrations both in Southwark and at Harvard University. This is also the 400th anniversary of the birth of Wenceslaus Hollar who drew his famous panoramas from the cathedral tower. In addition 1607 saw the funeral of William Shakespeare's brother Edmund who was buried between the choir stalls on the last day of the year.

Dates for your diary

22 April
FLORA LONDON MARATHON
ST GEORGE'S DAY & SHAKESPEARE'S BIRTHDAY

9/10 June
OPEN GARDEN SQUARES WEEKEND

8 July
TOUR DE FRANCE GRAND DEPART

15/16 September
THE MAYOR'S THAMES FESTIVAL
OPEN HOUSE LONDON

4 November
LONDON-BRIGHTON VETERAN CAR RUN

FRANK HARRIS
 and COMPANY
RESIDENTIAL SALES, LETTINGS and MANAGEMENT
 123 Stamford Street, London SE1 9NN
 020 7620 3400
 www.frankharris.co.uk

Spice of India
AUTHENTIC RECIPES
freshly prepared by our award-winning chef
NOW OPEN
 Open 7 days a week
 12 noon-2.30pm & 5.30pm-11.30pm
 Takeaway - 10% discount
 Fully licensed & air conditioned
a warm welcome awaits you at
 65 The Cut • South Bank • SE1 8LL
 020 7928 1286 • 020 7928 5280

in SE1**27 Blackfriars Road
London SE1 8NY**TEL 020 7633 0766 FAX 020 7401 2521
EMAIL listings@inSE1.co.uk WEB www.inSE1.co.uk© 2007 Bankside Press
ISSN 1750-1334 (Print)
ISSN 1750-1342 (Online)EDITOR Leigh Hatts
PRODUCTION EDITOR James Hatts
CONTRIBUTORS Marion Marples

PRINTED BY Copyprints Ltd

ADVERTISING

For details of our competitive rates call us for a rate card on 020 7633 0766 or email sales@inSE1.co.uk. You can also download our rate card from www.inSE1.co.uk

SUBSCRIPTIONS

To receive the next 12 issues by post in the UK please send a cheque for £8 to the address above, made payable to 'in SE1'. Please specify starting issue.

LISTINGS INFORMATIONListings are free; details of events to be considered for inclusion next month should be sent by **Monday 22 January** to listings@inSE1.co.uk or by post.**DISCLAIMER**

Every effort is made to ensure the accuracy of our listings but all details are subject to alteration by venues and organisers and no responsibility can be accepted for any inaccuracies.

**londonSE1
community website**

We also publish a community website, updated daily with local news and features and a lively discussion forum. Visit it today at www.London-SE1.co.uk

[SE1 Direct]

To ensure that you don't miss out on anything that's happening in SE1, make sure you receive our weekly email newsletter, SE1 Direct. Sign up today at www.SE1direct.co.uk. With 5200 email subscribers, can you afford to miss out?

**Blackfriars
Wine Bar****The South Bank's best kept secret invites
you to discover the charm of an *authentic*
WINE BAR****We have an extensive range of over 100
different wines from the Old and New World****Lunches Monday to Friday****Evening meals Tuesday to Friday****Open 10am till late Monday to Friday****ARCH 80, SCORESBY STREET, SOUTHWARK
LONDON SE1 TEL: 020 7928 0905**

3 mins from Southwark station • 5 mins from Tate Modern

londonSE1 Local news you
community website may have missed
www.London-SE1.co.uk**SE1 mineral water £5.58 a litre
(Or is it?)**In a move that brings to mind Del Boy's infamous 'Peckham Spring' water, Selfridges has begun to sell what it describes as SE1-branded mineral water.
...full story at www.London-SE1.co.uk**Borough Market rail viaduct:
decision due next summer**The future of Borough Market will be determined when the government decides whether or not to fund the Thameslink rail scheme next summer.
...full story at www.London-SE1.co.uk**Thousands crowd riverside
for New Year fireworks at the
London Eye**An estimated crowd of at least 250,000 lined the banks of the Thames to see in 2007 with the fireworks and lighting display at the London Eye on the South Bank.
...full story at www.London-SE1.co.uk**Fears for affordable housing
as Octavia Hill homes sold**Tenants of the Octavia Hill estates - including homes in Southwark and Waterloo - have expressed concern about the sale of properties by their new landlords.
...full story at www.London-SE1.co.uk**Locals recognised in New
Year Honours**A Bermondsey-based artist and the bosses of the Old Vic and Imperial War Museum are amongst those recognised in the 2007 New Year Honours List.
...full story at www.London-SE1.co.uk**New sculpture garden in
Waterloo churchyard**"Every event is special at St John's" said Mayor of Lambeth Liz Atkinson speaking at Waterloo's parish church before opening a new sculpture garden.
...full story at www.London-SE1.co.uk**Southwark pupils star in
Queen's broadcast**Pupils from Cathedral School and Charles Dickens Primary School featured in the Queen's Christmas message filmed at Southwark Cathedral.
...full story at www.London-SE1.co.uk**Tower Bridge Road building
collapse: builders fined**A building firm and its director have been fined £90,000 each for their part in the collapse of a bookshop and two flats in Tower Bridge Road two years ago.
...full story at www.London-SE1.co.uk**CALL ⁱⁿ the YARD****Most of the big and
successful local firms****do when
they have
something to
say and they
would like us
to give a sharp
edge to it.****PRINT
COPIES
REPORTS
BROCHURES**Communication
of all kinds**Copyprints Ltd
BUSINESS CENTRE
1 Talbot Yard
SE1 1YP**

www.copyprintsltd.co.uk

**Phone
Fax****020 7407 2079
020 7403 5411**

What's On in SE1

January 2007

Every month we bring you a 4-page pullout listings section

Find out more about the events listed on these pages.

Every event carries a 3 or 4-digit code

eg **TWELFTH NIGHT** 1375
PUPPETEERING 1508
LITTLE SHOP OF HORRORS 1040

1. Go to www.inSE1.co.uk
2. Type in the code
3. View the extended listing

Special Events

Bankside Pier

Bankside

Saturday 6 January
TWELFTH NIGHT 1375
12 noon; free

Twelfth Night is an annual seasonal celebration held in the Bankside area. It is a celebration of the New Year, mixing ancient seasonal customs with contemporary festivity. It is free, accessible to all and happens whatever the weather. To herald the celebration, the extraordinary Holly Man, the Winter guise of the Green Man from pagan myths and folklore, decked in fantastic green garb and evergreen foliage, appears from the River Thames brought by the Thames Cutter, Master Shipbroker (boat subject to weather!). With the crowd, led by the Bankside Mummies, the Holly Man 'brings in the green' and 'wassails' or toasts the people and the River Thames - an old tradition encouraging good growth. The Globe is wassailed in like fashion. The Mummies then process to the Bankside Jetty, and perform the traditional 'freestyle' Folk Combat Play of St. George, featuring the Turkey Sniper, Clever Legs, the Old 'Oss and many others, dressed in their spectacular 'guizes'. The play is full of wild verse and boisterous action, a time-honoured part of the season recorded from the Crusades. Cakes distributed at the end of the play have a bean and a pea hidden in two of them. Those who find them are hailed King and Queen for the day and crowned with ceremony. They then lead the people through the

streets to the historic George Inn in Borough High Street for a fine warming up with Storytelling, the Kissing Wishing Tree and more Dancing.

www.thelionspart.co.uk/twelfthnight

Oxo Tower Wharf

Bargehouse Street
www.oxotower.co.uk

Saturday 13 to Sunday 28 January
OXO SALE FORTNIGHT 1453

Midday to late
The Oxo Sale Fortnight is an opportunity to snap up some sought-after design items with discounts of up to 70%. Many of the 30 shops at Oxo Tower Wharf are offering discounts with the biggest savings on samples and slight seconds. Lighting, ceramics, tableware, glass, fashion & textiles, felt, furniture and artworks.

Rose Theatre Exhibition

56 Park Street
www.rosetheatre.org.uk

Saturday 13 January
NEW YEAR SPECIAL 1484

6pm & 8pm; £15 (inc glass of wine)
Join Richard Briers, Charles Dance and Janet Suzman at the Rose for an evening of favourite poetry and prose. Seats are unreserved, but bookings can be made by ringing the Box Office on 020 7261 9565 or by emailing rosetheatre.site@virgin.net

London Bridge

Sunday 14 January
BLESSING OF THE RIVER CEREMONY 1443

12 noon
Clergy from St Magnus the Martyr, Lower Thames Street and Southwark Cathedral

will perform this ancient ceremony on the Sunday that commemorates Christ's baptism in the Jordan. All are welcome.

St Andrew's Short Street

Short Street

Wednesday 10 & 24 January
MEDITATION FOR PEACE 1538
6.30pm

Every 2nd and 4th Wednesday at St Andrew's Community and Worship Centre. A response to the critical situation in the world and our community. Experience of meditation not essential. Open to everyone, faith or no faith. Contact Revd Jane Kustner at jane.kustner@btinternet.com

Children & Family

Design Museum

Shad Thames T 0870 909 9009

www.designmuseum.org
Daily 10am-5.45pm (last admission 5.15pm); £7 (conc £4; under-12s free)

Sunday 7, 14, 21 & 28 January

PUPPETEERING 1508

2pm; £7 (child free)
Inspired by characters in their favourite pantomime or story, children can become puppeteers by designing, making and decorating their own puppets. As the grand finale, the children stage a puppet show with their new creations.

HMS Belfast

Morgans Lane, Tooley Street T 020 7940 6300
hmsbelfast.iwm.org.uk

Saturday 27 to Sunday 28 January
NAVY GAMES 1512

11am & 2pm; £8.50 (child free)
The crew of HMS Belfast would have enjoyed playing games while off-duty to pass the time and bond with their fellow messmates. Throughout the weekend children and families can enjoy a couple of hours testing their wits by playing a variety of games around the ship's Second World War mess tables. Play a specially designed, informative board game following the Arctic Convoy,

which HMS Belfast served in, as it dodges German battle ships, submarines and enemy aircraft fire. Enjoy a game of Uckers, a traditional Naval game that would have been played onboard. Based on the popular board game Ludo, the Navy game has different rules.

Imperial War Museum

Lambeth Road T 020 7416 5000
london.iwm.org.uk

Saturday 6 to Sunday 7 January

THE NATURE OF THE BEAST 1513

1pm-5pm; free
Turn tanks into dinosaurs and aircraft into insects. All materials provided. All ages welcome with parental supervision.

Saturday 13 to Sunday 14 January

THE NATURE OF THE BEAST 1514

1pm-5pm; free
Turn tanks into dinosaurs and aircraft into insects. All materials provided. All ages welcome with parental supervision.

Saturday 20 to Sunday 21 January

HENRY MOORE WORKSHOP 1515

11am-4pm; free
Be inspired by Moore's own sketchbooks of people sheltering in the Blitz during the Second World War and work with artists to create your own studies looking at artefacts around the museum.

Saturday 27 to Sunday 28 January

IN THEIR SHOES 1516

11.30am & 2.30pm; free
A chance to look at Museum artefacts and discover the people and stories behind them.

[SE1 Direct]

Weekly email updates

www.SE1direct.co.uk

ROCK 'N' ROLL DANCE CLASSES
Every Monday
Except bank Holidays

Party Nights
January 13 record hop £5/£7
February 10 live music "Houserockers" £8/£10
March 10 record hop £5/£7
April 14 live music "The Alleycats" £8/£10

Come with or without partner, no need to book in advance

Dance classes start 6 & 7 pm, £5 or £8 for two hours
At Waterloo Action Center, 14a Baylis Road, London SE1 7AA
Contact: J. Leclerc: 02086889148 or Mob. 07944775556
Email: parisrockclub@aol.com or www.parisrockclub.com

Does your agent

ROAR

for you?



Maxim Property accepts nothing less than 100% commitment from our staff. We

- Advertise on all major websites
- Free valuations
- Professional referencing
- Floor plans
- Extensive advertising
- Accompanied viewings
- Management
- Maintenance team

48-50 Weston Street, London SE1 3QJ

Tel: 020 7357 7059 Fax: 020 7357 7067 e-mail: info@maximproperty.co.uk

Making your future secure

Public meetings

Friends of Hatfields Green

Monday 15 January
FRIENDS OF HATFIELDS GREEN 1442
6.30pm at *Practical Law Company, 19 Hatfields*
Friends of Hatfields Green invite you to a meeting to discuss: - Gardening clubs & local involvement in the site. - the design and tender process. - fundraising so far. Everyone welcome. If this time is inconvenient for you, but you'd like to be involved please email: tamsin@nutsa.ndboltsdesign.co.uk

Lambeth Council

www.lambeth.gov.uk

Wednesday 31 January
NORTH LAMBETH AREA COMMITTEE 1464

7pm at *Charles Edward Brooke School, Langton Road*
The theme will be Economic and Enterprise Strategy and Health. Agenda items will include local news, health in North Lambeth and enterprise and skills in North Lambeth.

Southwark Council

www.southwark.gov.uk

Monday 8 January
BERMONDSEY COMMUNITY COUNCIL 1036

7pm at *Ellen Brown Centre, Grange Road*
Meeting for residents of Riverside, Grange and South Bermondsey wards. Agenda includes police update and presentation on small grants for youth activities from London Bridge BID. Presentations on the consultation on the draft section 106 Planning contributions Supplementary Planning Document (SPD). Learn more about the Southwark Refugee Communities Forum. Cleaner, Greener, Safer update and public question time - put questions to your councillors.

Wednesday 10 January
BOROUGH AND BANKSIDE COMMUNITY COUNCIL 1378

7pm at *Charles Dickens School, Lant Street*
Meeting for residents of Cathedrals and Chaucer wards. Find out about Thamer Water's Victorian Mains Renewal programme.

Waterloo Action Centre

14 Baylis Road T 020 7261 1404
www.waterlooaactioncentre.co.uk

Wednesday 17 January
WATERLOO COMMUNITY DEVELOPMENT GROUP GENERAL MEETING 1386

7pm
Regular public meeting of the group that monitors proposed developments in Waterloo.

Talks & lectures

Calder Bookshop

51 The Cut T 020 7633 0599
www.calderpublications.com

Thursday 11 January
GEORGE ORWELL 1542
6.45pm; £5 (conc £3)
Michael McAvoy returns with his one man show time to present the personality of George Orwell and his work.

Thursday 25 January
JOHN CALDER'S BIRTHDAY 1541

6.45pm; £5 (conc £3)
Not a usual Thursday evening. John Calder on the occasion of his 80th birthday presents a scripted conversation with three of his birthday mates: Robert Burns (played by Andrew Neil), Virginia Woolf (Karin Fernald) and Somerset Maugham (Charles Osborne). Followed by a short selection from the written work of all four.

Imperial War Museum

Lambeth Road T 020 7416 5000
london.iwm.org.uk
Daily 10am-6pm; free

Thursday 25 January
HOLOCAUST MEMORIAL DAY LECTURE 1533

7pm; £7 (conc £6)
Lecture by documentary filmmaker Martin Smith showing how news of massacres and death camps in Nazi-occupied Poland reached London in 1942 and the reaction of the British government. Martin Smith was closely involved in the creation of both the United States Holocaust Memorial Museum and Imperial War Museum London's The Holocaust Exhibition. The lecture will be followed by music by the Solaris Quartet.

New Cut Housing Co-Operative Hall

106 The Cut

Tuesday 9 January
POTTERY SITE IN LAVINGTON STREET 836

7.30pm (refreshments from 7pm); £1
Lecture by Sian Anthony. Southwark & Lambeth Archaeological Society.

St Andrew's

Short Street

Sunday 28 January
DR RICHARD CHEETHAM: CAFE CONVERSATION 1463

5pm
Each week St Andrew's invites someone to come along and discuss their life and faith. Rt Revd Dr Richard Cheetham, Bishop of Kingston. All welcome. Tea and refreshments available.

Church services

Christ Church Southwark

27 Blackfriars Road T 020 7928 4707
www.christchurchsouthwark.org.uk

Sunday 7 January
PARISH COMMUNION 1452
9.30am
Parish Communion celebrating the arrival of the Three Kings.

St Andrew's

Short Street

Sunday 7 January
EPHANY CAROL SERVICE 1462
6.30pm
At the end of the Christmas season.

St John's Waterloo

Waterloo Road T 020 7928 2003
www.stjohnswaterloo.co.uk

Sunday 14 January
EPHANYTIDE CELEBRATION 1461
10.30am
Epiphanytide All-Age service.

Music

Christ Church Southwark

27 Blackfriars Road T 020 7928 4707
www.christchurchsouthwark.org.uk

Monday 29 January
GRACE MO 1466
1.10pm-1.50pm; donations welcome
A programme of classical music with Grace Mo (piano), fellow of the Guildhall School of Music and Drama. Music by Schubert, Ravel, Liszt and Chopin.

Guy's Chapel

St Thomas' Street

Thursday 11 January
CANDICE QUIGG & FIONA MACLEOD 1383
1pm; free
Recital by soprano Candice Quigg and pianist Fiona Macleod.

Thursday 18 January
DANIEL RUIZ CÉCCONELLO 1384
1pm; free
Recital by pianist Daniel Ruiz Ceconello.

Thursday 25 January
AINE SUZUKI & ANTOINE FRANCOISE 1385
1pm; free
Recital by violinist Aine Suzuki and pianist Antoine Francoise.

Southwark Cathedral

London Bridge T 020 7367 6700
www.southwark.anglican.org/cathedral/
Daily 8am-6pm; free

Monday 8 January
PETER WRIGHT 1503
1.10pm; free
Peter Wright; organ recital/

Tuesday 9 January
PIOTO STRING QUARTET: CLASSICAL RECITAL 899
3.15pm-4pm; free

Pioto String Quartet with Leader Daniel Pioto.

Monday 15 January
PETER WRIGHT 1504
1.10pm; free
Luncheon organ recital by Peter Wright of Southwark Cathedral.

Wednesday 17 & Thursday 18 January
LUDUS DANIELIS: THE PLAY OF DANIEL 1110
8pm; £8-£26 from 0845 120 7501
This rarely performed anonymous opera, dating from about 1230, was performed as part of the medieval New Year Feast of Fools when subdeacons and young clerics let their hair down in musical and theatrical festivities. The play combines exuberant burlesque elements with the mysteries of the story of the prophet Daniel, such as solving the Writing on the Wall, escaping the lions' jaws and prophesying the coming of Christ. Music by Andrew Lawrence King and his Harp Consort.

Monday 22 January
SUSAN LANSDALE 1505
1.10pm; free
Luncheon organ recital by Susan Lansdale.

Tuesday 23 January
SUZANNE LAIBOISNE AND PAULO LOPES : CLASSICAL RECITAL 901
3.15pm-4pm; free
Suzanne Laiboisne and Paulo Lopes (piano).

Monday 29 January
STEPHEN DISLEY 1506
1.10pm; free
Organ recital by Stephen Disley.

St John's Waterloo

Waterloo Road T 020 7928 2003
www.stjohnswaterloo.co.uk

Friday 12 January
LAURINE ROCHUT AND GUY DAVIS 1507
1.10pm; free
Violinist Laurine Rochut and pianist Guy Davis. Programme includes Mozart E minor Sonata, Janacek Violin Sonata and Faure Second Violin Sonata.

Comedy

Horse

122 Westminster Bridge Rd T 020 7928 6277
www.horsebar.co.uk

Thursday 25 January
UP THE ARTS COMEDY CLUB 1430
8.30pm; £4 (conc £3)
Dead Elvis New Talent Award. Thirteen great new comics compete to win a King sized burger. MC: Paul Ricketts.

Miller of Mansfield

96 Snowsfields
www.themiller.co.uk
Wednesday 17 January
UP THE ARTS COMEDY CLUB 1429
8.30pm; £6 (conc £5)
Kevin Dewsbury, Ivan Stewart, Rick Kiesewetter, Henry Ginsberg, Prince Abdi and Paul Ricketts. MC Peter Tennant.

Blackfriars
Settlement

Interested in becoming a trustee of Blackfriars Settlement?

As the Settlement celebrates 120 years of service delivery in North Southwark and Waterloo, it is facing an exciting, but challenging, five years which includes the redevelopment of its Rushworth Street site.

If you live locally and would like to be involved in shaping the organisation as a neighbourhood resource please contact Julie Corbett-Bird on 020 7928 9521 or email: julie.corbett-bird@blackfriars-settlement.org.uk.

Registered Charity No. 210558 Limited Company Registered in London No. 31105

Winter Sale
Now on



Huge reductions on ex-display furniture
Discounts on new orders



The Furniture Union

Bankside Lofts, 65a Hopton Street, London SE1 9LR
T: 020 7928 5155 F: 020 7928 5253

Theatre

National Theatre

Belvedere Road T 020 7452 3000
www.nationaltheatre.org.uk

Until Thursday 11 January
THERESE RAQUIN 978

Lyttelton Theatre; in repertory; £10-£28
Tickets: www.inSE1.co.uk/tickets/978
Stifled by an oppressive mother-in-law and a sickly husband, Therese Raquin falls passionately for another man. Their feverish affair drives the lovers to an act of terrible desperation, which catapults them headlong into a world more claustrophobic than the one they sought to destroy. This gripping thriller, adapted by Zola himself from his notorious novel, is seen here in a version by Nicholas Wright whose recent work at the National includes *Vincent in Brixton*, and his adaptations of *Three Sisters* and *His Dark Materials*.

Until Thursday 11 January
THE SEAFARER 634

Cottesloe Theatre; Mon-Sat 7.30pm; £10-£28
Conor McPherson makes his National Theatre debut directing his new play set in Dublin on Christmas Eve. Sharky has returned to look after his irascible, ageing brother who's recently gone blind. Old drinking buddies Ivan and Nicky are holed up at the house too, hoping to play some cards. But with the arrival of a stranger from the distant past, the stakes are raised ever higher. In fact, Sharky may be playing for his very soul...

Until Saturday 13 January
WAVES 977

Cottesloe Theatre; in repertory; £10-£28
Tickets: www.inSE1.co.uk/tickets/977
A fragmented and dreamlike tale of friendship, loss, identity and love. This multi-media production, devised by Katie Mitchell and the Company, is based on Virginia Woolf's groundbreaking experiment in literary form, *The Waves*.

Until Saturday 20 January
CORAM BOY 848

Olivier Theatre
Tickets: www.inSE1.co.uk/tickets/848
The phenomenal sell-out production returns to the National. A tale of two cities: Gloucester and London. A tale of two orphans at the Coram Hospital for Deserted Children: Toby, saved from an African slave ship and Aaron, the abandoned son of the heir to a great estate. A tale of fathers and sons, set in the dark heart of 18th-century England. An epic adventure filled with danger and excitement.

Thursday 18 January to Thursday 1 March
HAPPY DAYS 1248

Lyttelton Theatre; in repertory
Samuel Beckett's *Happy Days* directed by Deborah Warner, with Fiona Shaw as Winnie. Blazing light, scorched grass. Buried to above her waist and woken by a piercing bell, Winnie chatters away as she rummages in a bag, brushes her teeth, pulls out and kisses a revolver.

Her husband, Willie, responds now and then, reads from an old paper, studies a pornographic postcard. A second bell signals the end of another happy day. Written in 1960, Samuel Beckett's extraordinary play opened the Lyttelton Theatre in 1976.

Monday 29 January to Saturday 10 March
THE MAN OF MODE 1249

Olivier Theatre; in repertory
Nicholas Hytner directs George Etherege's *The Man of Mode*. The cast includes Amber Agah, Hayley Atwell, Nancy Carroll, Tom Hardy, Shelley King, Rory Kinnear and Amit Shah. Dorimant, who can generally charm any woman in town back to his apartment, can't persuade Belinda into his bed until he's promised to dump Loveit, his current mistress. Mission accomplished, he turns his sights on Harriet, who is rich enough to solve his financial problems but smart enough not to play his game. George Etherege's glittering masterwork of Restoration Comedy is set in a London obsessed with having it all, and takes a steely look at young people driven by the need to have the latest clothes, the latest gossip and each other's bodies.

Menier Chocolate Factory

51 Southwark Street T 020 7907 7060
www.menierchocolatefactory.com

Until Sunday 25 February
LITTLE SHOP OF HORRORS 1040

Tue-Sat 8pm; Sat & Sun 3.30pm; £24 (conc £16)
Tickets: www.inSE1.co.uk/tickets/1040
For the first time in over 20 years the classic rock musical *Little Shop of Horrors* is back on a London stage. Full review at www.London-SE1.co.uk

The Old Vic

103 The Cut T 0870 060 6628
www.oldvictheatre.com

Friday 5 January to Saturday 17 February
TWELFTH NIGHT 230

£10, £25, £35
Tickets: www.inSE1.co.uk/tickets/230
Edward Hall directs *Propeller*, an all-male company, in two comedies full of mistaken identity and transformation. In *Twelfth Night*, a man plays a girl disguised as a boy, which confuses everybody. What begins as an idle trick played on an unwitting drunk at a party in Padua, ends in bittersweet confusion on the island of Illyria.

Thursday 11 January to Saturday 17 February
THE TAMING OF THE SHREW 231

£10, £25, £35
Tickets: www.inSE1.co.uk/tickets/231
Edward Hall directs *Propeller*, an all-male company, in two comedies full of mistaken identity and transformation. In *The Taming of the Shrew*, a man playing a boy dresses up as a girl, which confuses Christopher Sly. Over the course of the two plays, Shakespeare takes us on a journey that constantly reminds us that the opposite is always true.

Unicorn Theatre

147 Tooley Street T 08700 535500
www.unicorntheatre.com

Tuesday 16 to Sunday 21 January
THE LITTLE MATCH GIRL 1517

£9.50 (conc £6.50)
In the depths of the nordic winter, a little girl lights a match for warmth, illuminating a captivating vision. Peering past the match's glow, she glimpses a snug room with a crackling fire and a table groaning with food. Stretching out her arms it seems almost within her grasp... With music, shadows and puppetry, this is an uplifting version of Hans Christian Andersen's enduring fairytale. Award-winning Danish theatre company Gruppe 38 bring their distinctive dark humour and vivid imagination to the Unicorn for this short season of plays.

Tuesday 23 to Friday 26 January
RUN, CHICKEN, RUN 1518

£9.50 (conc £6.50)
Poul tells anarchic stories with the help of his invisible assistant and a succession of bizarre objects that pop through the trap doors of his ingenious set. He brings to life a farmyard full of pigs, a hot air balloon-ride high over lakes and forests, and a miniature disco packed with hundreds of partygoing mice that comes to a disgustingly sticky end! For everyone aged 6+ Award-winning Danish theatre company Gruppe 38 bring their distinctive dark humour and vivid imagination to the Unicorn for this short season of plays.

Until Sunday 28 January
JOURNEY TO THE RIVER SEA 1004

Weston Theatre; times vary; £14.50 (conc £9.50)
First produced at the Unicorn Theatre in February 2006, *Journey to the River Sea* returns to London for the festive season following its highly acclaimed national tour. A family musical for everyone aged 7+, *Journey to the River Sea* tells the story of a young girl; Maia, who leaves Edwardian London following the death of her parents to live with distant relatives in the Amazon.

Saturday 27 January to Sunday 4 February
A SONATINA 1519

£9.50 (conc £6.50)
Three travellers break down in their little van somewhere in the back of beyond. To pass the time, they decide to tell themselves the tale of Little Red Riding Hood - but with a real live chicken, a double bass, and a collection of very odd objects in the back of the van, there's no telling how the story will end... For everyone aged 6+ Award-winning Danish theatre company Gruppe 38 bring their distinctive dark humour and vivid imagination to the Unicorn for this short season of plays.

Union Theatre

204 Union Street T 020 7261 9876
www.uniontheatre.org

Tuesday 16 January to Saturday 10 February
FAULTLINES 1502

Tue-Sat 7.30pm; £7-£12
14 year old Steph is missing. Fingers are pointed as people look for someone to blame. Close to home relationships crack. Every moment questioned. Every action re-lived. This gripping play exposes a fragile world where work is drying up, identities are lost and families aren't what they used to be.

Young Vic

The Cut T 020 7928 6363
www.youngvic.org

Until Saturday 27 January
THE ENCHANTED PIG 599

Mon-Sat 7.30pm and occasional matinees; £21.50 (conc available)
Tickets: www.inSE1.co.uk/tickets/599
The Christmas family show is a musical based on a Romanian folktale. Music by Jonathan Dove with words by Alasdair Middleton. Full review at www.London-SE1.co.uk

Movie highlights

BFI IMAX

Charlie Chaplin Walk T 020 7902 1234
www.bfi.org.uk/imax

Until Wednesday 31 January
HAPPY FEET 1420

£12; child £8
Set in the great nation of Emperor Penguins, *Happy Feet* is a hilarious comedy computer animation with an all-star cast from the producer of *Babe*. Despite being born into a world of singers, young Mumble (Elijah Wood) is possibly the worst singer ever, but finds himself dancing to his own tune... tap dancing! The star-studded cast also includes Nicole Kidman, Robin Williams, Hugh Jackman and Brittany Murphy. *Happy Feet* is screened in spectacular IMAX format.

Tate Modern

Bankside T 020 7887 8888
www.tate.org.uk/modern

Sun-Thu 10am-6pm; Fri & Sat 10am-10pm; free

Monday 8 January
WE ARE THE LAMBETH BOYS 1100

7pm refreshments from 6.30pm; free
1959 black and white drama. 52 minutes. Karel Reisz's 1959 film about members of Alford House Youth Club in Kennington. (Music: Johnny Dankworth). Membership of the Community Film Club is primarily aimed at those living and working in Southwark. To become a member email communityfilmclub@tate.org.uk or join on the night.

[SE1 Direct]

Weekly email updates

www.SE1direct.co.uk

ANNEGRET O'DWYER

www.annegretodwyer.co.uk

Integrative Psychotherapy
Stress Management

Abbeyfield

Rotherhithe Society
21-22 Smith Close
SE16 5PB

offers private accommodation within a sheltered housing unit for elderly people who are reasonably fit but who no longer wish or feel able to live alone.

Two meals are provided daily. Residents are welcome for long or short term stays to suit their own situations and the needs of their families, for example, for holidays.

More information phone
Brenda Crawley 020 7231 5946



THE TRADITIONAL ACUPUNCTURE CENTRE

75 Roupell Street, London SE1 8SS • 020 7928 8333
acupuncture@btconnect.com • www.acupuncturecentre.org.uk

The largest dedicated acupuncture clinic in Europe established since 1983. More than 20 professionally qualified and registered practitioners of Chinese Medicine including Herbal Medicine and Tui Na (Chinese Medical Massage)

5 minute walk from Waterloo, Waterloo East and Southwark stations

Open 8am-9pm Mondays to Fridays • 9am-6pm Saturdays

Calm and tranquil atmosphere.

Free consultations to discuss whether treatment could be helpful for you.

Exhibitions

Bankside Gallery

48 Hopton Street T 020 7928 7521
www.banksidegallery.com
Daily 10am-6pm; free

Until Thursday 25 January

MINIATURE PICTURE SHOW 412

Work by members of the Royal Watercolour Society and the Royal Society of Painter-Printmakers on sale framed and unframed from £35 to £200.

Wednesday 31 January to Tuesday 6 February
FREE PAINTERS AND SCULPTORS PRIZE WINNERS 1475

This diverse exhibition features work by the winner and runners up of the Nina Hosali prize as well as current Members of this well established Society. The Nina Hosali prize aims to encourage an eclectic, original and post-modern approach to painting, print making, mixed media and sculpture. All work is very affordable and for sale.

The Bargehouse

Barge House Street T 020 7401 2255
www.oxotower.co.uk
Daily 11am-6pm; free

Friday 26 to Sunday 28 January

MA FINE ART INTERIM SHOW 1470

Students from the MA Fine Art course at Central Saint Martins College of Art and Design present a diverse range of artworks using both traditional and new media techniques to push at the boundaries of fine art practice.

City Hall

The Queen's Walk T 020 7983 4100
www.london.gov.uk
Mon-Fri 9am-8pm;

Thursday 4 to Friday 26 January

PICCADILLY LINE: PAST, PRESENT AND FUTURE 1266

The Piccadilly line was opened as the Great Northern Piccadilly and Brompton Railway on 15 December 1906 between Finsbury Park and Hammersmith. This exhibition compiled from the archives of London's Transport Museum combines well-known and rarely-seen images, including the architecture of Charles Holden and the Underground shelters of WWII.

Design Museum

Shad Thames T 0870 909 9009
www.designmuseum.org
Daily 10am-5.45pm (last admission 5.15pm); £7 (conc £4; under-12s free)

Until Sunday 7 January

DESIGN MART 2006 636

Full review at www.London-SE1.co.uk

Until Sunday 18 February

ALAN FLETCHER: FIFTY YEARS OF GRAPHIC WORK (AND PLAY) 1116

Alan Fletcher (1931-2006) was among the most influential figures in the history of British graphic design.

Elspeth Kyle Gallery

1st & second floors, 233 Blackfriars Road
www.novas.org
Wed, Thu, Fri 10am-5pm; free

Thursday 18 January to Friday 16 February

NESS: LOST IN THE TRANSLATION 1380

Bringing together the interactive, three-dimensional work of four Japanese artists living and working in London: Natsue Ikeda, Ryosuke Kawana, Rie Nakajima and Kimiya Yoshikawa. The artists have been given access to the gallery for a month prior to the grand opening, using the Christmas and New Year holiday to realise ambitious never seen before site-specific installation work.

f a projects

1-2 Bear Gardens T 020 7928 3228
www.faprojects.com
Tue-Fri 10am-6pm; Sat 12 noon-5pm; free

Thursday 11 January to Saturday 10 February

WOODCRAFT FOLK 1537

Juneau/Projects/ draw from their own experiences in the Woodcraft Group (an alternative to Scouts) to explore ideas

of tradition, evolution, consumerism, youth, and amateurism in popular culture. Appropriating not only the title of the movement but the attitudes and aesthetics associated with similar social groups, Woodcraft Folk draws comparisons between the activist origins of The Woodcraft Folk and the contemporary attraction of the Emo subculture.

Guy's Hospital

St Thomas' Street T 020 7188 7188
www.gstt.nhs.uk

Until Wednesday 14 February

BIOJEWELLERY 1434

This small collection of unique rings is borne out of a design project which aimed to explore bio-technical engineering. www.biojewellery.com

HMS Belfast

Morgans Lane, Tooley Street T 020 7940 6300
hmsbelfast.iwm.org.uk

Summer 10am-6pm, Winter till 5pm
(last admission 45 minutes before closure); charge applies; children free

Until Friday 8 June

GHOSTS OF JUTLAND 110

Commemorating 90th anniversary of the 8,648 British and German sailors lost over the course of one day at Battle of Jutland. Features a hologram of Henry Allingham, aged 109, who survived.

Imperial War Museum

Lambeth Road T 020 7416 5000
london.iwm.org.uk
Daily 10am-6pm; free

Until Sunday 22 April

THE ANIMALS' WAR 160

£6 (conc £5, children £4)

Tickets: www.inSE1.co.uk/tickets/160

Explores the remarkable role of animals in conflict from the First World War to the present day.

Full review at www.London-SE1.co.uk

Until Wednesday 25 April

HENRY MOORE: WAR AND UTILITY 685

£7 (conc £5)

Tickets: www.inSE1.co.uk/tickets/685

To mark the twentieth anniversary of Henry Moore's death, a major retrospective exhibition that comprises over 160 works produced between 1938 and 1954 that demonstrate the richness and fertility of Moore's artistic practice during this period.

Full review at www.London-SE1.co.uk

Jerwood Space

171 Union Street T 020 7654 0171
www.jerwoodspace.co.uk
Mon-Sat 10am-5pm; free

Until Monday 8 January

BENJAMIN SENIOR: REGENESIS 1283

An installation which is drawn partly onto large sections of paper and partly onto the wall.

Saturday 6 to Saturday 27 January

MIRROR MIRROR 1501

Artists Sista Pratesi, Sophy Rickett, Thomas Haywood and Darren Marshall come together through their search to depict the moment of transformation.

Laura Bartlett Gallery

22 Leathermarket Street T 020 7403 3714
www.laurabartlettgallery.com
Wed-Sun 12 noon-6pm or by appt; free

Thursday 25 January to Saturday 3 March

ABSTRACT THINGS 1485

Curated by Harrell Fletcher.

Llewellyn Alexander Fine Paintings

124-126 The Cut T 020 7620 1322
www.llewellynalexander.com
Mon-Sat 10am-7.30pm; free

Monday 8 January to Tuesday 6 February

ART UNDER £1000 1270

Mixed show of oils, watercolours and pastels featuring Jo Dixon, Peter Kettle, Fraser King, Tessa Spencer Pryse, Tessa Shedly Jordan and others. All work is priced at under £1,000.

London College of Communication

Elephant & Castle
www.lcarts.ac.uk

Tuesday 9 to Friday 26 January

COLIN O'BRIEN: RETROSPECTIVE

IMAGES 06/07 1441

Colin O'Brien's photographs take a nostalgic look back at life. He has for over fifty years recorded the experiences and sights of living in London in all its diversity, familiarity and strangeness. www.colinobrien.co.uk

Menier Gallery

51 Southwark Street T 020 7407 5388
www.paintingsinhospitals.org.uk
Mon-Sat 10am-6pm; free

Tuesday 9 to Saturday 13 January

SIDE EFFECTS 1497

This exhibition is the culmination of artwork produced over a six year period in the Occupational Therapy sessions held on the acute psychiatric wards at the York Clinic, London Bridge. The exhibition is not about showcasing peoples' artistic ability but more about the unpretentious honesty of their expression, it is work which reflects something of the diverse, strange, uninhibited & complex emotional states experienced by those who suffer mental illness. It is a privileged view into these states of mind which on some level touch us all.

Tuesday 16 to Saturday 20 January

OUR JOURNEY: SOUTHWARK REFUGEE ARTISTS NETWORK 1498

Southwark Refugee Artists Network presents an exhibition including photojournalism from Iraq, Africa & Latin America, paintings and hand made crafts from China, Iraq, Iran, Ecuador, Peru, Chile the Balkans and Ghana. There will also be various opportunities to see live music performances, poetry readings and mime as well as dance expressing SRAN artists' participation in London life.

Tuesday 23 January to Saturday 3 February

MYTH AND CITY: PAINTINGS BY

PATRICK WRIGHT 1499

It takes one to know one you might say of Patrick Wright who has turned the culture of the business world into a powerful satire through paintings. Wright has created an allegory in which modern day business tactics are revealed in parallels with Greek myth. Central to Wright's theme is the story of Sisyphus, the first successful businessman of ancient myth shown in contemporary settings.

National Theatre

South Bank T 020 7452 3000
www.nationaltheatre.org.uk
Foyers open Mon-Sat 10am-11pm; free

Until Saturday 27 January

THE ART OF THE THEATRE

WORKSHOP 809

From their Agitprop beginnings to the success of Oh What a Lovely War, the story of how the Theatre Workshop's political and artistic principles broke with the traditions of the day is shown in photographs and designs. The result was a mode of working whose influence can still be felt today. This exhibition coincides with the publication of Murray Melvin's book *The Art of the Theatre Workshop*, which will be on sale at the NT Bookshop.

Monday 22 January to Saturday 3 March

CLIMATES: PHOTOGRAPHS BY NURI

BILGE CEYLAN 1255

Ceylan's acclaimed film *Climates*, winner of the Jury Prize at Cannes and the Time Out Critics' Choice at the London Film Festival, opens in Britain on 9 February. Taken over the past four years whilst scouting for locations, these wide screen photographic landscapes and portraits of Turkey and its people are stunningly beautiful, and relate to the film in both style and geography.

Nolia's Gallery 2

60 Great Suffolk Street T 020 7701 9111
www.noliassgallery.co.uk
Daily 10am-6pm; free

Friday 12 to Tuesday 16 January

AN ART EXHIBITION 1534

Works by Char Amison, Michelle Eddy, Lisa Swindell, Sam Rowland, William

Cummock, George Ancock and Graham Bond.

Novas Gallery

73-81 Southwark Bridge Road T 0870 906 3200
www.novas.org
Mon-Fri 11am-6pm; Sat & Sun 11am-4pm; free

Thursday 11 January to Saturday 10 February

START MAKING THE MOST OF YOUR MEMORIES 1381

The exquisite work of several brand new emerging artists. The stories these artists characterise we can all empathise with - the story of the 'way we were', from defining themselves through consumer goods, to personal relationships with others.

Poussin Gallery

Block K, 175 Bermondsey Street T 020 7403 4444
www.poussin-gallery.com
Wed-Sat 1pm-7pm; free

Wednesday 24 January to Saturday 3 February

POUSSIN REVIEW: RECENT BRITISH ABSTRACT PAINTING AND SCULPTURE 1479

Poussin Review returns to the gallery with a rehung show of more of the best in recent British abstract art.

Purdy Hicks Gallery

65 Hopton Street T 020 7401 9229
www.purdyhicks.com
Mon-Fri 10am-5.30pm (wed 7pm); Sat & Sun 12 noon-5pm; free

Friday 12 January to Saturday 10 February

RALPH FLECK: GIVERNY 1407

Paintings of Monet's garden at Giverny.

Southwark Cathedral

London Bridge T 020 7367 6700
www.southwark.anglican.org/cathedral/
Daily 8am-6pm; free

Until Wednesday 31 January

A PHOTOGRAPHIC OSSUARY 1175

An exhibition in the Refectory featuring photographs by Robin Kirk. A life-long interest in photography was recently rekindled by the digital age and he commenced a course in photography which was interrupted by a discovery of osteopathy, hence the interest in bones. Photos of the Cathedral are interspersed with photos of bones. Practising next door to Southwark Cathedral the photographer had ample opportunity to watch the different shadows cast as the sun passed round the building and the seasons passed through the year, marked by the presence and absence of leaves on the trees.

www.photosbyrobinkirk.com

St John's Waterloo

Waterloo Road T 020 7928 2003
www.stjohnswaterloo.co.uk

Until Thursday 8 February

SCENES OF LONDON LIFE 1376

To celebrate 80 remarkable years of charitable work Central & Cecil is staging an exhibition of archive images that encapsulate the proud history of the Waterloo Road-based housing trust. The exhibition will also contain contemporary photographs that convey what is significant and unique about modern London life. Residents, staff and supporters of Central & Cecil enthusiastically submitted their own photographs to be competitively judged by David Angel. He chose Rosemary Phillip's vivid shot of Notting Hill Carnival as the overall winner of the competition.

Tate Modern

Bankside T 020 7887 8888
www.tate.org.uk/modern
Sun-Thu 10am-6pm; Fri & Sat 10am-10pm; free

Until Sunday 14 January

PETER FISCHLI & DAVID WEISS 637

£7 (conc £5.50)

The first UK retrospective to explore the collaborative art practice of Swiss artists Peter Fischli (b1952) and David Weiss (b1946).

Full review at www.London-SE1.co.uk

Tate Modern

Bankside T 020 7887 8888
www.tate.org.uk/modern
Sun-Thu 10am-6pm; Fri & Sat 10am-10pm; free

Until Sunday 21 January
DAVID SMITH: A CENTENNIAL 639
£7 (conc £5.50)

David Smith (1906-65), one of the most innovative and influential American sculptors of the twentieth century, has his centenary marked by the largest selection of his work ever shown in Europe. Smith pioneered welding in sculpture and is best known for his innovative and remarkably diverse large-scale metal pieces constructed from used machine parts, abandoned tools and scrap metal.

Until Sunday 18 February
MEDIA BURN 1535

Media Burn explores the boundaries between art, politics, protest and the media. It combines contemporary works with those from the 1970s and 1980s, all sharing a DIY, collage aesthetic that involves manipulating the images and techniques of the mass media.

Until Monday 2 April

CARSTEN HOLLER: TEST SITE: THE UNILEVER SERIES 638

The German artist who lives in Sweden fills the Turbine Hall with a surprise installation in The Unilever Series. The installation comprises five giant slides linking the gallery spaces with the floor of the Turbine Hall. His Sliding Doors was presented at Tate Modern in 2003.

the.gallery@oxo

Oxo Tower Wharf T 020 7401 2255
www.oxotower.co.uk
Daily 11am-6pm; free

Thursday 4 January to Sunday 4 February
CURTAINS: NEIL BAILEY 1448
Neil Bailey's bright bold graphic style has been influenced as much by Patrick Caulfield and Marcel Duchamp as by his parallel career as a sign writer. Curtains presents 20 large scale pieces using canvas and resin offering a delightfully English take on surrealism. The viewer is invited to explore a wonderfully strange world where fish, birds and insects are mixed with supermarket reward cards and plastic flowers.
www.neilbailey.co.uk

Union Gallery

57 Ewer Street T 020 7928 3388
www.union-gallery.com
Mon-Fri 10am-6pm, Sat 12 noon-5pm; free

Until Saturday 27 January
MIKE MARSHALL 322
Solo exhibition of new works.

Union Works

New Globe Walk
Saturday 6 to Saturday 13 January
EXIT 1436

Daily 12 noon-7pm; free
SHEONE (James Choules) will hold his first solo show in London at Union Works. The building will be demolished after this exhibition. There will be a late opening on Saturday 13 January until 10pm.
www.illuminateproductions.co.uk

HEALTH & WELLBEING

Alternative healthcare on the South Bank

The South Bank has a range of alternative health practitioners serving those living and working in the area. Several are already working together as part of an informal Southbank Holistic network.

The flagship is the Colombo Centre in Colombo Street off Blackfriars Road which is proud to offer "affordable fitness". The Centre, a charity independent of Lambeth and Southwark Councils, is even able to provide free use to certain community groups.

Colombo has a sports hall with badminton, indoor football and basketball; an indoor cycling studio and both yoga and pilates classes. The New Year sees changes in the weights equipment.

The new Breathe studio at the Colombo Centre offers sports, deep tissue and other gentle forms of massage. Also available are reflexology, lymphatic drainage, Reiki and life coaching.

Just beyond Colombo Centre's outdoor courts for football, basketball, netball and tennis, is the Traditional Acupuncture Centre in Roupell Street. This was established in 1983 seeking to address the unique needs of each individual as a whole person in body, mind and spirit.

The initial consultation can take up to two hours and subsequent treatments usually last between thirty minutes and one hour. Although there is a standard fee it is the hope of the the Centre that people who need treatment are not denied it on grounds of cost.

Directly opposite the Colombo Centre is Christ Church Garden where the church buildings house the South Bank Alexander Centre founded by Peter Nobes. He

describes the Alexander Technique as a simple and practical method for self-improvement and self -help. "Breathing and speaking become easier and movement becomes freer, lighter and more enjoyable."

Also at Christ Church are Brenda Hobdell's popular Iyengar yoga classes held both at lunchtime and in the early evening.

Meanwhile, psychotherapist Annegret O'Dwyer, after working in Surrey and Harley Street for ten years, has settled in SE1 where she is building a practice for individuals and running one day stress management seminars for businesses.

Colombo Centre

020 7261 1658
www.colombo-centre.org

Breathe at the Colombo Centre

020 7261 1658
www.holisticbodyworktherapies.com

Traditional Acupuncture Centre

020 7928 8333
www.acupuncturecentre.org.uk

South Bank Alexander Centre

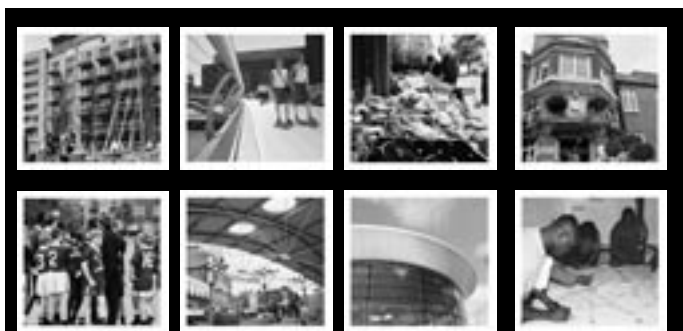
020 7928 6378
www.alexandercentre.co.uk

Iyengar Yoga with Brenda Hobdell

020 8265 1081
www.southbankyoga.co.uk

Annegret O'Dwyer

020 7620 0300
www.annegretodwyer.co.uk



Borough and Bankside Community Council

Wednesday 10 January – 7:00pm
Charles Dickens Primary School
Lant Street SE1

We will be talking about Thames Water's Victorian mains replacement programme, police update and much more...

Visit our website www.southwark.gov.uk or phone 020 7525 7514



[SE1 Direct]

Weekly email updates

www.SE1direct.co.uk

BOOK REVIEW

Service Wash by Rupert Smith

Serpent's Tail £7.99 • Buy online at www.inSE1.co.uk/books

Rupert Smith lives in SE1 and his earlier novel *Fly on the Wall* was set in the Elephant & Castle.

This time the lead character is a writer with his base in Waterloo in a story which features a soap star born in the Elephant & Castle with a father who had other "families up and down the 68 bus route".

The author wrote *EastEnders: 20 Years in Albert Square* and one feels that the soap New Town could be *EastEnders*.

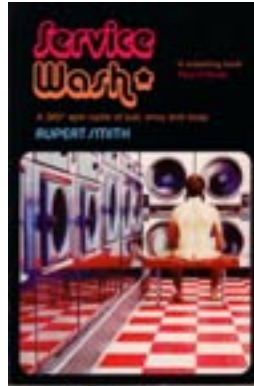
The New Town star Eileen Weathers plays the launderette manager.

Having also worked on Michael Barrymore's unpublished autobiography, Rupert Smith is familiar with the showbiz world. The descriptions of award nights, location filming and parties are very funny and often convincing. Waterloo gives easy access to both studios and West End parties where Rupert must have spent a long time hanging around as both a writer and a journalist.

His description of a TV production company where only one person had been there for more than a year will be recognised by many attempting to sell programme ideas.

Not quite so convincing is the author's grasp of legal procedure but then his characters run close to the law.

The novel is published by Serpent's Tail as part of its 20th anniversary celebration list.



BOOK REVIEW

Mr Jeffries Magic Supermarket

Susan Gallivan • Buy online at www.inSE1.co.uk/books

Local author Susan Gallivan's short stories for children give an imaginary life to the fruit and vegetables and other goods on the supermarket shelves.

Friends King Edward and Jersey Royal go exploring each night, safely returning to their places before the security guards switch off the lights.

The treatment of the goods during the day – customers dropping the tins on the floor or relocating the grapes for example – provides opportunities to teach children about the ways in which food is prepared and packaged. There is an emphasis on healthy eating and good behaviour eg not running in the aisles.

Each chapter has a suggested drawing activity – as the book has no illustrations it might also be fun for slightly older children to create the characters and their comical situations themselves.

Definitely a book for sharing with children and then developing the ideas on your own supermarket shop or visit to Borough Market.

Marion Marples



Alexander Technique New Year's resolution?

The Alexander Technique makes a real difference to my often tense and busy life. Its thoughtful approach has made me calmer, improved my concentration and given me a clearer sense of my own well being. I am grateful for it.

Joan Bakewell, TV presenter and journalist

Change. Real, lasting change.

South Bank Alexander Centre
Blackfriars Rd SE1
www.AlexanderCentre.co.uk

change@AlexanderCentre.co.uk

020 7928 6378

Exploring your birth chart in person is a deeply affirmative experience. Illuminate the unfolding of your life with an experienced astrologer.

Diane Ketteringham
020 8938 3112

breathe...
mind, body, spirit studio

Sports and Deep Tissue
Massage

Holistic Massage

Life Coaching

Meditation

Reiki

for bookings, call the Colombo Centre
on 07766 343931
34-68 Colombo St | Waterloo | SE1 6DP

Looking to get fit in the New Year?

At Guy's and St Thomas' we have a 25-metre swimming pool and more...

The Thomas Guy Club is the Sports and Social Club at Guy's and St Thomas' Hospital and it has associate membership available.

Our facilities include a 25 metre swimming pool at Guy's Hospital, with 3 different level speed lanes and are ideal for lane swimming.

We also have Gyms on both the Guy's and St Thomas' sites. St Thomas' gym also has 2 squash courts, a fitness studio and saunas.

For further details on membership and to arrange a viewing of the facilities call Patrick Hourihan on 020 7188 6641 or by e-mail Patrick.Hourihan@gstt.nhs.uk



VERY FRIENDLY SPACE!

Space available in bright contemporary architects studio in The Jam Factory SE1. Self contained and open plan available, ideal for creative disciplines. £70 - £78 per desk pw includes all bills, rates, ADSL, share WC/shower/kitchen and meeting room. CONTACT IA FOR ANY FURTHER DETAILS ON 020 7407 0955 or space@divearchitects.com